

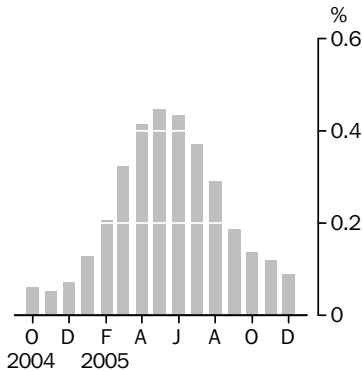
RETAIL TRADE

AUSTRALIA

EMBARGO: 11.30AM (CANBERRA TIME) FRI 3 FEB 2006

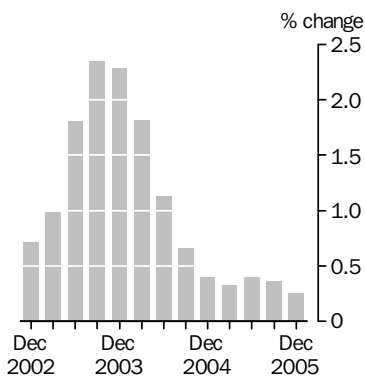
Monthly turnover

Trend estimates
% change



Quarterly turnover

in volume terms
Trend estimates



INQUIRIES

For further information about these and related statistics, contact the National Information and Referral Service on 1300 135 070 or Graham Phillips on Canberra (02) 6252 5625.

KEY FIGURES

	Dec 05 \$m	Nov 05 to Dec 05 % change
Turnover at current prices		
Trend estimates	17 243.3	0.1
Seasonally adjusted estimates	17 267.1	0.4

	Dec Qtr 05 \$m	Sep Qtr 05 to Dec Qtr 05 % change
Turnover, in volume terms		
Trend estimates	50 663.3	0.3
Seasonally adjusted estimates	50 678.3	0.3

KEY POINTS

TREND ESTIMATES

- The trend estimate of turnover for the Australian Retail and Hospitality/Services series increased by 0.1% in December 2005. This follows a similar increase of 0.1% in each of the two previous months.
- In December 2005, the states with the largest increase in the trend estimate were Tasmania (+0.4%), Queensland and the Australian Capital Territory (both +0.3%) while states with a decline were South Australia (-0.3%) and Victoria (-0.2%).

SEASONALLY ADJUSTED ESTIMATES

- The seasonally adjusted estimate of turnover increased by 0.4% in December 2005 following a decrease of 0.1% in November and an increase of 0.5% in October 2005.
- All states, except the Australian Capital Territory, had an increase in the seasonally adjusted estimate. The states with the largest increase were the Northern Territory (+2.2%), South Australia and Tasmania (both +0.7%) and Queensland (+0.6%).

ORIGINAL ESTIMATES

- In original terms, Australian turnover increased by 25.5% in December 2005 compared with November 2005. Chains and other large retailers (which are completely enumerated) increased by 32.0%, while the estimate for 'smaller' retailers (the sampled units) increased by 16.9%.
- Australian turnover increased by 3.9% in December 2005 compared with December 2004. Chains and other large retailers increased by 5.3%, while 'smaller' retailers increased by 1.8%.

VOLUME MEASURES

- The trend volume measure of turnover increased by 0.3% in the December quarter 2005. This follows a 0.4% increase in the September quarter 2005. In seasonally adjusted terms, the volume measure increased by 0.3% in the December quarter 2005.

NOTES

FORTHCOMING ISSUES

<i>ISSUE</i>	<i>RELEASE DATE</i>
January 2006	2 March 2006
February 2006	31 March 2006
March 2006	8 May 2006
April 2006	30 May 2006
May 2006	3 July 2006
June 2006	2 August 2006

CHANGES IN THIS ISSUE

Quarterly chain volume data are shown in tables 14 and 15 of this issue.

SAMPLING ERRORS

Standard errors for the Australian estimates (original data) for December 2005 contained in this publication are:

<i>Data Series</i>	<i>Estimate</i>	<i>Standard error</i>
Level of retail turnover (\$m)	22 491.3	175.1
Change from preceding month (\$m)	4 570.7	62.3
% change from preceding month (%)	25.5	0.4

For more information see the Explanatory Notes, paragraphs 32–36.

ABBREVIATIONS

ABN	Australian Business Number
ABS	Australian Bureau of Statistics
ANZSIC	Australian and New Zealand Standard Industrial Classification
ARIMA	autoregressive integrated moving average
ATO	Australian Taxation Office
n.e.c.	not elsewhere classified
PAYGW	pay-as-you-go withholding
RSE	relative standard error
TAU	type of activity unit

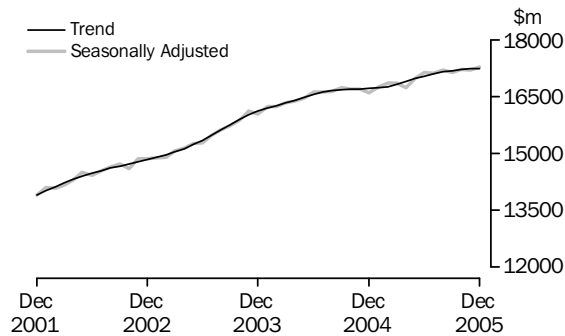
Dennis Trewin
Australian Statistician

INDUSTRY TRENDS

MONTHLY SEASONALLY ADJUSTED AND TREND ESTIMATES

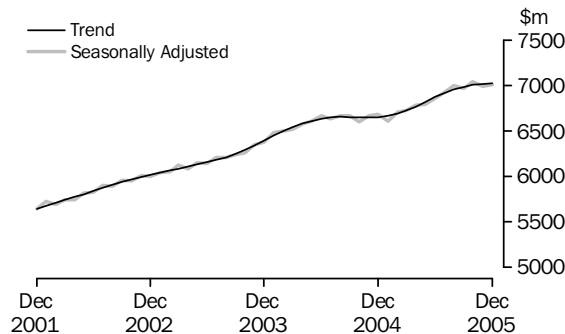
TOTAL RETAIL

There has been five months of weak trend growth. Department stores, Clothing and soft good retailing and Recreational good retailing have had a decline in the trend estimate for three or more months. Food retailing and Household good retailing have had weak growth for three and seven months respectively, while Hospitality and services has had moderate or strong growth for 11 months.



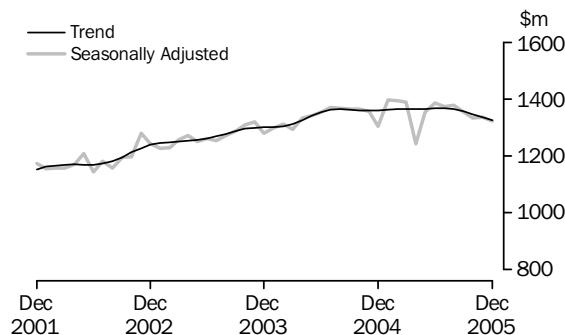
FOOD RETAILING

The rate of growth in the trend estimate has been slowing since July 2005 with weak growth for the last three months. In December 2005, New South Wales, Victoria, Tasmania and the Australian Capital Territory had weak growth with all other states having had a decline in the trend estimate.



DEPARTMENT STORES

There has been a decline in the trend estimate for five months. All published states, except the Australian Capital Territory (no change), had a decline in the trend estimate in December 2005 with New South Wales (nine months) and Victoria (five months) having been in decline the longest.

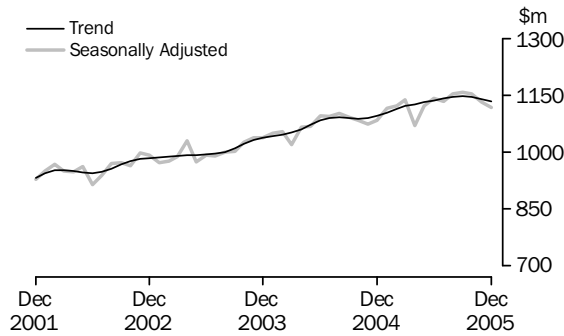


INDUSTRY TRENDS *continued*

MONTHLY SEASONALLY ADJUSTED AND TREND ESTIMATES

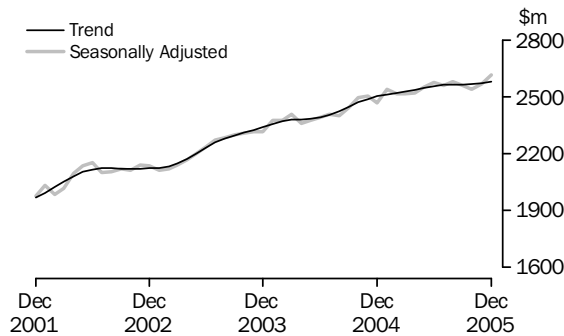
**CLOTHING AND SOFT
GOOD RETAILING**

There has been a decline in the trend estimate for three months. New South Wales, Victoria (both four months), Queensland (one month) and South Australia (two months) have had a decline in the trend estimate.



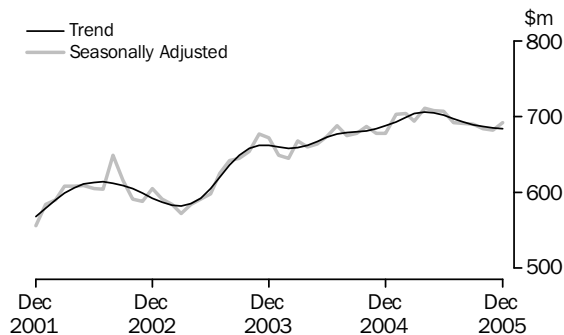
**HOUSEHOLD GOOD
RETAILING**

There has been weak trend growth for seven months. Victoria and South Australia have had a decline in the trend estimate for at least six months while all other states, except New South Wales, have had at least five months of moderate or strong growth.



**RECREATIONAL GOOD
RETAILING**

There has been a decline in the trend estimate for eight months. Queensland, South Australia, the Northern Territory and the Australian Capital Territory have had no change or a decline in the trend estimate for three or more months. Victoria has had three months of weak growth while Western Australia and Tasmania have had strong growth for four or more months.

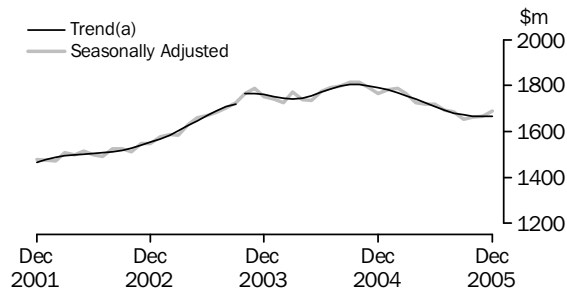


INDUSTRY TRENDS *continued*

MONTHLY SEASONALLY ADJUSTED AND TREND ESTIMATES

OTHER RETAILING

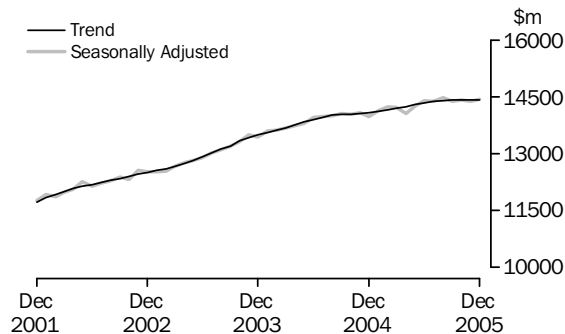
After a decline in the trend estimate for 13 months, there was no change in December 2005. Victoria (seven months), Western Australia (14 months) and the Australian Capital Territory (two months) have had a decline in the trend estimate. After 16 months of no change or a decline in the trend estimate New South Wales had weak growth in December 2005.



(a) Break in trend series from October 2003.

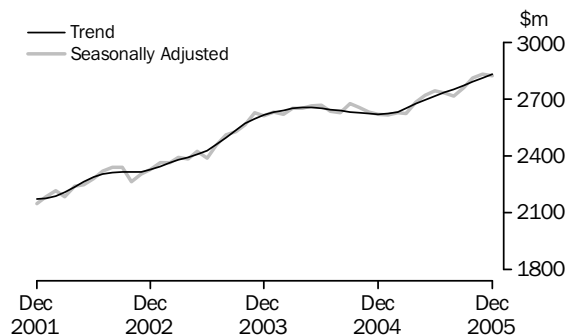
TOTAL RETAIL (EXCLUDING HOSPITALITY AND SERVICES)

Total retail (excluding Hospitality and services) has had no change for three months. Over the last eight months, the rate of trend growth for Total retail (excluding Hospitality and services) has been slower than Total industries (including Hospitality and services).



HOSPITALITY AND SERVICES

There has been 11 months of moderate or strong growth. New South Wales, Queensland and the Northern Territory have had strong growth for three, 12 and five months respectively, while Victoria, South Australia and Western Australia have had a decline in the trend estimate for three or more months.

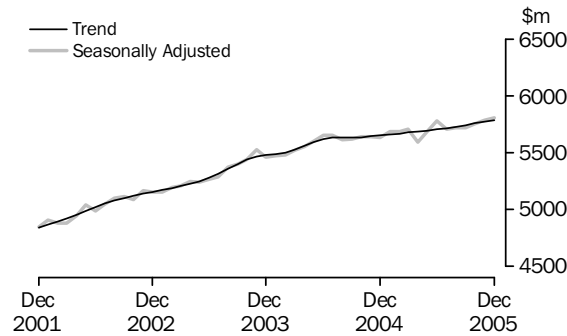


STATE TRENDS

MONTHLY SEASONALLY ADJUSTED AND TREND ESTIMATES

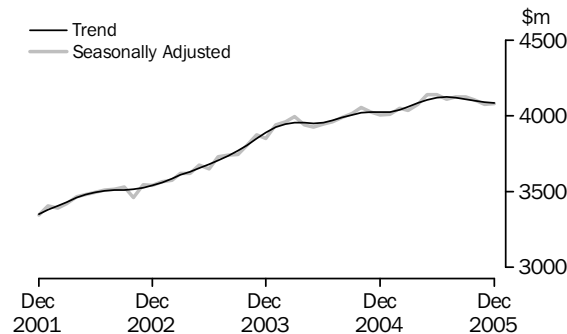
NEW SOUTH WALES

There has been weak trend growth for more than 12 months. Department stores and Clothing and soft good retailing have had a decline in the trend estimate for nine and four months respectively. The rate of growth in the Food industry has been slowing since August 2005 with weak growth in December 2005.



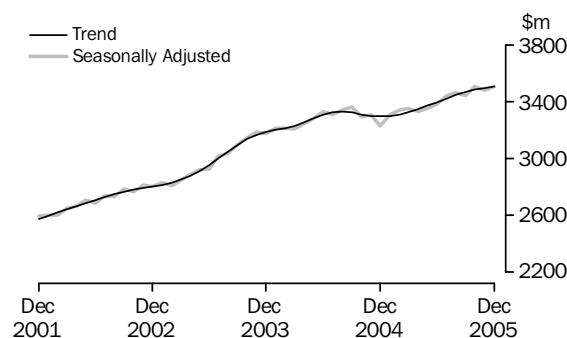
VICTORIA

There has been a decline in the trend estimate for five months. Food retailing and Recreational good retailing have had weak trend growth for two and three months respectively. All other industries have had a decline in the trend estimate for at least three months with Other retailing (seven months) and Household good retailing (six months) having been in decline the longest.



QUEENSLAND

After nine months of moderate growth in the trend, there was weak growth in December 2005. Department stores, Clothing and soft good retailing and Recreational good retailing have had a decline in the trend estimate for four, two and eight months respectively. Growth in the trend estimate for Food retailing has been slowing since July 2005 with a decline in the trend estimate in December 2005.

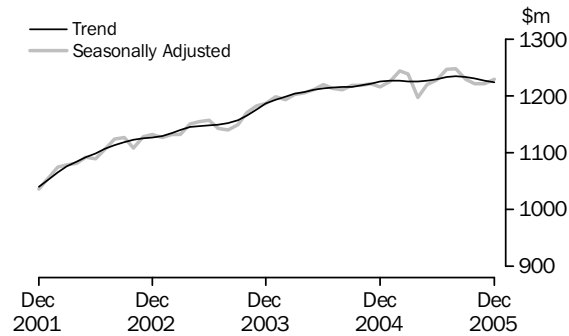


STATE TRENDS *continued*

MONTHLY SEASONALLY ADJUSTED AND TREND ESTIMATES

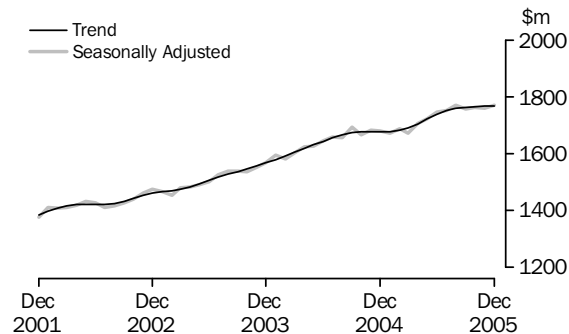
SOUTH AUSTRALIA

There has been a decline in the trend estimate for four months. All industries, except Other retailing, had a decline in the trend estimate in December 2005. Household good retailing (11 months), Hospitality and services (six months) and Department stores (four months) have been in decline the longest.



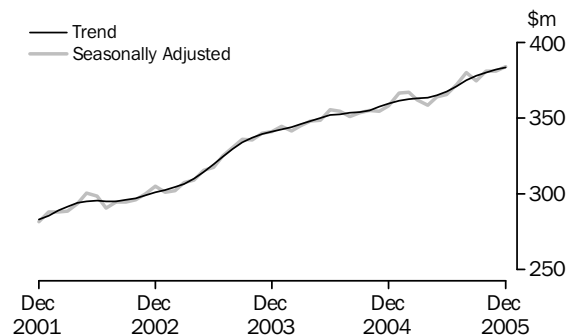
WESTERN AUSTRALIA

Growth in the trend estimate has been slowing since July 2005, with no change in the trend in December 2005. Food retailing, Department stores, Other retailing and Hospitality and services have had a decline in the trend estimate for one, four, 14 and four months respectively. All other industries have had moderate or strong growth for at least three months.



TASMANIA

There has been moderate growth in the trend estimate for three months. Household good retailing and Recreational good retailing having had strong growth for seven and ten months respectively. Clothing and soft good retailing and Hospitality and services had moderate growth in December 2005.



RETAIL TURNOVER, By Industry Group(a)

Month	Food retailing	Department stores	Clothing and soft good retailing	Household good retailing	Recreational good retailing	Other retailing	Hospitality and services	Total
ORIGINAL (\$ million)								
2004								
October	6 769.0	1 328.5	1 107.3	2 579.4	660.4	1 861.3	2 778.2	17 084.2
November	6 664.6	1 507.0	1 116.6	2 675.6	687.5	1 927.3	2 682.5	17 261.0
December	7 761.5	2 452.5	1 565.6	3 204.2	1 004.1	2 621.4	3 043.3	21 652.6
2005								
January	6 648.1	1 224.5	1 086.8	2 496.2	685.4	1 604.5	2 585.1	16 330.6
February	6 188.0	1 015.4	876.7	2 206.4	633.6	1 551.4	2 369.1	14 840.5
March	6 865.0	1 264.3	1 038.5	2 337.4	675.1	1 647.0	2 592.5	16 419.8
April	6 658.5	1 127.0	1 050.6	2 350.4	663.1	1 589.0	2 665.6	16 104.2
May	6 590.6	1 235.2	1 133.1	2 435.6	651.1	1 646.5	2 634.1	16 326.2
June	6 504.7	1 420.1	1 146.3	2 532.8	656.0	1 598.1	2 595.3	16 453.4
July	6 871.7	1 259.0	1 073.5	2 519.9	675.2	1 598.1	2 752.9	16 750.3
August	6 889.3	1 188.6	1 049.5	2 528.7	674.1	1 649.4	2 698.5	16 678.0
September	6 890.8	1 255.4	1 134.0	2 513.0	669.7	1 623.0	2 730.5	16 816.4
October	7 109.7	1 285.5	1 182.3	2 598.9	652.5	1 693.9	2 909.0	17 431.7
November	7 062.3	1 513.0	1 181.7	2 735.1	699.5	1 822.7	2 906.2	17 920.6
December	8 178.8	2 486.3	1 631.4	3 418.8	1 018.3	2 479.5	3 278.1	22 491.3
SEASONALLY ADJUSTED (\$ million)								
2004								
October	6 602.3	1 365.9	1 083.3	2 493.7	686.5	1 815.8	2 654.4	16 701.9
November	6 669.2	1 356.5	1 074.1	2 504.7	677.5	1 790.9	2 632.4	16 705.4
December	6 681.0	1 302.6	1 083.0	2 468.5	677.5	1 764.6	2 618.6	16 595.9
2005								
January	6 603.5	1 395.9	1 115.9	2 537.5	703.1	1 781.1	2 613.9	16 750.8
February	6 707.2	1 394.3	1 121.5	2 517.3	703.5	1 787.4	2 626.8	16 857.9
March	6 721.2	1 388.4	1 137.6	2 515.1	694.0	1 766.3	2 622.1	16 844.7
April	6 780.5	1 243.8	1 069.7	2 518.7	711.2	1 725.5	2 683.2	16 732.6
May	6 793.7	1 354.2	1 121.8	2 551.8	708.2	1 717.9	2 717.8	16 965.4
June	6 856.9	1 387.3	1 141.9	2 574.9	707.2	1 719.8	2 741.9	17 129.9
July	6 924.3	1 373.6	1 134.3	2 560.2	691.6	1 693.2	2 730.6	17 107.7
August	6 996.2	1 378.2	1 153.2	2 578.8	690.5	1 684.5	2 714.4	17 195.9
September	6 967.2	1 354.6	1 158.3	2 557.3	689.8	1 650.9	2 758.9	17 137.0
October	7 036.5	1 333.7	1 153.6	2 538.7	684.3	1 662.1	2 811.1	17 219.9
November	6 988.3	1 334.2	1 132.3	2 568.2	681.9	1 664.9	2 831.5	17 201.3
December	7 006.4	1 323.5	1 117.2	2 614.4	692.3	1 689.2	2 824.2	17 267.1
TREND ESTIMATES (\$ million)								
2004								
October	6 646.5	1 358.7	1 087.3	2 470.0	681.4	1 802.9	2 626.1	16 689.4
November	6 645.1	1 359.0	1 089.3	2 488.9	683.7	1 797.6	2 622.0	16 698.4
December	6 650.9	1 360.7	1 095.3	2 502.2	687.6	1 789.3	2 619.8	16 710.3
2005								
January	6 665.4	1 363.0	1 104.4	2 511.0	693.2	1 779.6	2 622.2	16 731.8
February	6 688.4	1 364.4	1 113.6	2 517.5	699.1	1 768.4	2 632.5	16 766.5
March	6 722.5	1 365.1	1 121.1	2 525.3	703.7	1 756.2	2 650.9	16 820.5
April	6 765.3	1 365.6	1 126.3	2 536.5	705.9	1 742.2	2 673.8	16 889.9
May	6 815.6	1 366.1	1 130.8	2 548.3	705.3	1 725.7	2 696.8	16 965.7
June	6 869.3	1 366.5	1 136.4	2 556.6	701.9	1 707.4	2 716.7	17 039.1
July	6 916.7	1 366.3	1 142.4	2 561.1	697.3	1 691.4	2 734.2	17 102.3
August	6 954.3	1 364.1	1 146.7	2 563.4	692.8	1 680.1	2 750.9	17 151.9
September	6 982.4	1 356.8	1 147.5	2 564.7	689.0	1 672.4	2 769.3	17 184.1
October	7 002.6	1 346.2	1 144.7	2 567.8	686.6	1 667.5	2 790.4	17 207.6
November	7 018.0	1 335.3	1 139.8	2 573.0	685.2	1 665.2	2 811.7	17 227.9
December	7 026.5	1 325.4	1 133.5	2 579.1	684.4	1 664.8	2 832.3	17 243.3

(a) See paragraph 5 of the Explanatory Notes.

RETAIL TURNOVER PERCENTAGE CHANGE, By Industry Group(a)

Month	Food retailing	Department stores	Clothing and soft good retailing	Household good retailing	Recreational good retailing	Other retailing	Hospitality and services	Total
ORIGINAL (% change from preceding month)								
2004								
October	3.1	3.1	3.4	8.6	0.1	3.4	5.9	4.3
November	-1.5	13.4	0.8	3.7	4.1	3.5	-3.4	1.0
December	16.5	62.7	40.2	19.8	46.1	36.0	13.5	25.4
2005								
January	-14.3	-50.1	-30.6	-22.1	-31.7	-38.8	-15.1	-24.6
February	-6.9	-17.1	-19.3	-11.6	-7.6	-3.3	-8.4	-9.1
March	10.9	24.5	18.5	5.9	6.6	6.2	9.4	10.6
April	-3.0	-10.9	1.2	0.6	-1.8	-3.5	2.8	-1.9
May	-1.0	9.6	7.9	3.6	-1.8	3.6	-1.2	1.4
June	-1.3	15.0	1.2	4.0	0.8	-2.9	-1.5	0.8
July	5.6	-11.3	-6.4	-0.5	2.9	0.0	6.1	1.8
August	0.3	-5.6	-2.2	0.3	-0.2	3.2	-2.0	-0.4
September	0.0	5.6	8.1	-0.6	-0.7	-1.6	1.2	0.8
October	3.2	2.4	4.3	3.4	-2.6	4.4	6.5	3.7
November	-0.7	17.7	-0.1	5.2	7.2	7.6	-0.1	2.8
December	15.8	64.3	38.1	25.0	45.6	36.0	12.8	25.5
SEASONALLY ADJUSTED (% change from preceding month)								
2004								
October	-1.0	0.1	-0.8	2.0	1.2	0.1	-0.7	-0.2
November	1.0	-0.7	-0.8	0.4	-1.3	-1.4	-0.8	0.0
December	0.2	-4.0	0.8	-1.4	0.0	-1.5	-0.5	-0.7
2005								
January	-1.2	7.2	3.0	2.8	3.8	0.9	-0.2	0.9
February	1.6	-0.1	0.5	-0.8	0.1	0.4	0.5	0.6
March	0.2	-0.4	1.4	-0.1	-1.3	-1.2	-0.2	-0.1
April	0.9	-10.4	-6.0	0.1	2.5	-2.3	2.3	-0.7
May	0.2	8.9	4.9	1.3	-0.4	-0.4	1.3	1.4
June	0.9	2.4	1.8	0.9	-0.1	0.1	0.9	1.0
July	1.0	-1.0	-0.7	-0.6	-2.2	-1.5	-0.4	-0.1
August	1.0	0.3	1.7	0.7	-0.2	-0.5	-0.6	0.5
September	-0.4	-1.7	0.4	-0.8	-0.1	-2.0	1.6	-0.3
October	1.0	-1.5	-0.4	-0.7	-0.8	0.7	1.9	0.5
November	-0.7	0.0	-1.8	1.2	-0.3	0.2	0.7	-0.1
December	0.3	-0.8	-1.3	1.8	1.5	1.5	-0.3	0.4
TREND ESTIMATES (% change from preceding month)								
2004								
October	-0.1	-0.2	-0.2	1.0	0.2	0.0	-0.2	0.1
November	0.0	0.0	0.2	0.8	0.3	-0.3	-0.2	0.1
December	0.1	0.1	0.6	0.5	0.6	-0.5	-0.1	0.1
2005								
January	0.2	0.2	0.8	0.3	0.8	-0.5	0.1	0.1
February	0.3	0.1	0.8	0.3	0.9	-0.6	0.4	0.2
March	0.5	0.0	0.7	0.3	0.6	-0.7	0.7	0.3
April	0.6	0.0	0.5	0.4	0.3	-0.8	0.9	0.4
May	0.7	0.0	0.4	0.5	-0.1	-0.9	0.9	0.4
June	0.8	0.0	0.5	0.3	-0.5	-1.1	0.7	0.4
July	0.7	0.0	0.5	0.2	-0.7	-0.9	0.6	0.4
August	0.5	-0.2	0.4	0.1	-0.6	-0.7	0.6	0.3
September	0.4	-0.5	0.1	0.0	-0.5	-0.5	0.7	0.2
October	0.3	-0.8	-0.2	0.1	-0.3	-0.3	0.8	0.1
November	0.2	-0.8	-0.4	0.2	-0.2	-0.1	0.8	0.1
December	0.1	-0.7	-0.6	0.2	-0.1	0.0	0.7	0.1

(a) See paragraph 5 of the Explanatory Notes.

RETAIL TURNOVER, By Sub-Group(a): Original

Month	FOOD RETAILING				CLOTHING & SOFT GOOD RETAILING				HOUSEHOLD GOOD RETAILING			
	Super-markets & grocery stores	Take-away food retailing	Other food retailing	Total	Department stores	Clothing retailing	Foot-wear, fabric & other soft good retailing	Total	Furniture & floor covering retailing	Domestic hardware & house-ware retailing	Domestic appliance & recorded music retailing	Total
\$ MILLION												
2004												
December	5 392.1	788.5	1 581.0	7 761.5	2 452.5	1 188.2	377.4	1 565.6	623.5	967.2	1 613.6	3 204.2
2005												
January	4 757.6	746.3	1 144.2	6 648.1	1 224.5	784.1	302.7	1 086.8	601.5	781.6	1 113.1	2 496.2
February	4 433.5	670.4	1 084.1	6 188.0	1 015.4	626.6	250.1	876.7	539.7	688.6	978.0	2 206.4
March	4 924.8	723.1	1 217.1	6 865.0	1 264.3	770.7	267.7	1 038.5	554.8	755.6	1 027.0	2 337.4
April	4 712.7	745.5	1 200.3	6 658.5	1 127.0	773.8	276.8	1 050.6	573.6	724.8	1 052.0	2 350.4
May	4 710.7	738.0	1 141.9	6 590.6	1 235.2	841.1	292.0	1 133.1	607.1	717.2	1 111.3	2 435.6
June	4 634.1	731.7	1 139.0	6 504.7	1 420.1	857.7	288.6	1 146.3	623.5	706.9	1 202.4	2 532.8
July	4 907.7	788.7	1 175.3	6 871.7	1 259.0	783.9	289.5	1 073.5	649.2	712.1	1 158.6	2 519.9
August	4 929.6	761.5	1 198.2	6 889.3	1 188.6	769.2	280.2	1 049.5	630.4	757.7	1 140.6	2 528.7
September	4 916.8	759.5	1 214.5	6 890.8	1 255.4	841.5	292.5	1 134.0	609.5	780.6	1 122.9	2 513.0
October	5 037.2	800.2	1 272.3	7 109.7	1 285.5	861.7	320.6	1 182.3	604.2	861.0	1 133.7	2 598.9
November	4 971.1	782.0	1 309.1	7 062.3	1 513.0	873.4	308.3	1 181.7	610.3	895.7	1 229.1	2 735.1
December	5 634.7	854.9	1 689.2	8 178.8	2 486.3	1 244.8	386.6	1 631.4	647.6	991.6	1 779.6	3 418.8
% CHANGE FROM PRECEDING MONTH												
2004												
December	13.5	9.4	32.4	16.5	62.7	42.7	32.9	40.2	-1.0	12.0	36.5	19.8
2005												
January	-11.8	-5.3	-27.6	-14.3	-50.1	-34.0	-19.8	-30.6	-3.5	-19.2	-31.0	-22.1
February	-6.8	-10.2	-5.3	-6.9	-17.1	-20.1	-17.4	-19.3	-10.3	-11.9	-12.1	-11.6
March	11.1	7.9	12.3	10.9	24.5	23.0	7.1	18.5	2.8	9.7	5.0	5.9
April	-4.3	3.1	-1.4	-3.0	-10.9	0.4	3.4	1.2	3.4	-4.1	2.4	0.6
May	0.0	-1.0	-4.9	-1.0	9.6	8.7	5.5	7.9	5.8	-1.0	5.6	3.6
June	-1.6	-0.9	-0.3	-1.3	15.0	2.0	-1.2	1.2	2.7	-1.4	8.2	4.0
July	5.9	7.8	3.2	5.6	-11.3	-8.6	0.3	-6.4	4.1	0.7	-3.6	-0.5
August	0.4	-3.4	1.9	0.3	-5.6	-1.9	-3.2	-2.2	-2.9	6.4	-1.6	0.3
September	-0.3	-0.3	1.4	0.0	5.6	9.4	4.4	8.1	-3.3	3.0	-1.5	-0.6
October	2.4	5.4	4.8	3.2	2.4	2.4	9.6	4.3	-0.9	10.3	1.0	3.4
November	-1.3	-2.3	2.9	-0.7	17.7	1.4	-3.8	-0.1	1.0	4.0	8.4	5.2
December	13.3	9.3	29.0	15.8	64.3	42.5	25.4	38.1	6.1	10.7	44.8	25.0
% CHANGE FROM CORRESPONDING MONTH OF PREVIOUS YEAR												
2004												
December	6.9	2.8	10.9	7.3	2.8	3.6	7.8	4.6	5.1	5.5	9.7	7.5
2005												
January	-1.4	-0.6	0.9	-0.9	5.4	3.4	8.0	4.6	10.2	5.4	2.2	5.0
February	-0.2	-0.6	4.0	0.5	4.6	-0.6	17.1	3.9	8.7	1.8	1.0	3.1
March	5.4	3.9	9.6	5.9	14.2	11.0	8.0	10.2	-0.4	3.4	0.9	1.4
April	0.8	0.8	5.0	1.5	-9.9	0.3	10.6	2.8	12.4	4.5	11.6	9.5
May	1.4	2.3	5.9	2.3	-1.3	2.2	9.7	4.0	12.4	2.8	10.8	8.7
June	2.7	4.3	5.8	3.4	4.8	4.4	8.2	5.4	9.2	2.7	9.4	7.4
July	2.3	3.3	5.9	3.0	-1.4	1.3	3.0	1.8	10.3	-0.6	6.9	5.5
August	6.0	3.0	9.1	6.2	3.9	6.3	3.7	5.6	13.3	3.1	8.0	7.7
September	4.8	0.1	9.2	5.0	-2.5	5.5	6.8	5.9	6.4	-0.2	10.1	5.8
October	4.3	5.4	7.7	5.0	-3.2	5.1	11.6	6.8	-2.2	-0.5	3.4	0.8
November	4.7	8.5	9.6	6.0	0.4	4.9	8.6	5.8	-3.1	3.7	4.0	2.2
December	4.5	8.4	6.8	5.4	1.4	4.8	2.4	4.2	3.9	2.5	10.3	6.7

(a) See paragraph 5 of Explanatory Notes.

RETAIL TURNOVER, By Sub-Group(a): **Original** *continued*

Month	RECREATIONAL GOOD RETAILING			OTHER RETAILING			HOSPITALITY & SERVICES				Total all industries
	News- paper, book & stationery retailing	Other recre- ational goods retailing	Total	Pharma- ceutical, cosmetic & toiletry retailing	Other retailing n.e.c.	Total	Hotels & licensed clubs	Cafes & restau- rants	Selected services	Total	
\$ MILLION											
2004											
December	612.5	391.6	1 004.1	945.9	1 675.4	2 621.4	1 698.4	1 088.5	^ 256.4	3 043.3	21 652.6
2005											
January	464.9	220.5	685.4	634.3	970.2	1 604.5	1 463.7	911.8	^ 209.6	2 585.1	16 330.6
February	441.2	192.4	633.6	640.6	910.8	1 551.4	1 322.0	863.0	^ 184.1	2 369.1	14 840.5
March	445.0	230.2	675.1	702.8	944.2	1 647.0	1 472.8	919.8	^ 199.9	2 592.5	16 419.8
April	435.3	227.8	663.1	685.3	903.8	1 589.0	1 529.6	926.3	^ 209.6	2 665.6	16 104.2
May	443.6	207.5	651.1	701.3	945.2	1 646.5	1 516.6	915.8	^ 201.6	2 634.1	16 326.2
June	431.1	224.8	656.0	689.7	908.4	1 598.1	1 488.1	901.6	^ 205.6	2 595.3	16 453.4
July	463.8	211.3	675.2	692.1	906.0	1 598.1	1 584.8	943.6	^ 224.5	2 752.9	16 750.3
August	461.1	213.0	674.1	702.4	946.9	1 649.4	1 571.5	917.7	^ 209.3	2 698.5	16 678.0
September	453.7	216.0	669.7	683.3	939.6	1 623.0	1 557.8	949.9	^ 222.8	2 730.5	16 816.4
October	433.0	219.5	652.5	700.6	993.3	1 693.9	1 643.1	1 029.4	^ 236.5	2 909.0	17 431.7
November	461.2	238.3	699.5	734.1	1 088.7	1 822.7	1 635.6	1 034.0	^ 236.6	2 906.2	17 920.6
December	612.3	406.0	1 018.3	906.5	1 573.0	2 479.5	1 874.6	1 132.8	^ 270.7	3 278.1	22 491.3

% CHANGE FROM PRECEDING MONTH

2004											
December	37.1	62.6	46.1	20.6	46.6	36.0	13.6	11.6	20.7	13.5	25.4
2005											
January	-24.1	-43.7	-31.7	-32.9	-42.1	-38.8	-13.8	-16.2	-18.2	-15.1	-24.6
February	-5.1	-12.7	-7.6	1.0	-6.1	-3.3	-9.7	-5.3	-12.2	-8.4	-9.1
March	0.9	19.6	6.6	9.7	3.7	6.2	11.4	6.6	8.6	9.4	10.6
April	-2.2	-1.0	-1.8	-2.5	-4.3	-3.5	3.9	0.7	4.9	2.8	-1.9
May	1.9	-8.9	-1.8	2.3	4.6	3.6	-0.8	-1.1	-3.8	-1.2	1.4
June	-2.8	8.4	0.8	-1.6	-3.9	-2.9	-1.9	-1.5	2.0	-1.5	0.8
July	7.6	-6.0	2.9	0.3	-0.3	0.0	6.5	4.7	9.2	6.1	1.8
August	-0.6	0.8	-0.2	1.5	4.5	3.2	-0.8	-2.7	-6.8	-2.0	-0.4
September	-1.6	1.4	-0.7	-2.7	-0.8	-1.6	-0.9	3.5	6.5	1.2	0.8
October	-4.5	1.6	-2.6	2.5	5.7	4.4	5.5	8.4	6.1	6.5	3.7
November	6.5	8.6	7.2	4.8	9.6	7.6	-0.5	0.4	0.0	-0.1	2.8
December	32.8	70.4	45.6	23.5	44.5	36.0	14.6	9.6	14.4	12.8	25.5

% CHANGE FROM CORRESPONDING MONTH OF PREVIOUS YEAR

2004											
December	7.6	-6.1	1.8	7.2	-1.1	1.8	4.6	-2.3	7.9	2.3	4.9
2005											
January	11.9	-2.7	6.7	-1.0	2.8	1.2	1.2	-8.0	2.0	-2.2	1.1
February	9.9	-0.5	6.5	3.1	-1.2	0.5	0.8	-9.1	0.3	-3.1	1.0
March	2.3	4.6	3.1	-0.1	-2.2	-1.3	3.9	-10.4	5.1	-1.6	4.0
April	7.6	10.8	8.7	0.0	0.1	0.0	6.5	-6.1	1.9	1.4	1.9
May	5.9	6.7	6.1	-1.9	-0.5	-1.1	7.8	-6.5	-0.6	1.7	2.7
June	5.3	7.0	5.9	-2.9	-2.8	-2.9	6.5	-1.9	4.0	3.2	3.7
July	3.1	-6.4	-0.1	-6.2	-6.1	-6.2	6.8	-2.8	5.6	3.2	1.9
August	4.1	3.7	3.9	-5.8	-3.6	-4.6	9.6	-5.0	6.8	4.0	4.6
September	3.2	-1.7	1.5	-10.4	-9.5	-9.9	10.6	-6.2	10.6	4.1	2.7
October	0.5	-4.5	-1.2	-9.0	-9.0	-9.0	5.9	2.3	7.1	4.7	2.0
November	3.2	-1.0	1.8	-6.4	-4.7	-5.4	9.4	6.1	11.4	8.3	3.8
December	0.0	3.7	1.4	-4.2	-6.1	-5.4	10.4	4.1	5.6	7.7	3.9

^ estimate has a relative standard error of 10% to less than 25% and should be used with caution (a) See paragraph 5 of Explanatory Notes.

RETAIL TURNOVER, By state

Month	New South Wales	Victoria	Queensland	South Australia	Western Australia	Tasmania	Northern Territory	Australian Capital Territory	Australia
-------	-----------------	----------	------------	-----------------	-------------------	----------	--------------------	------------------------------	-----------

ORIGINAL (\$ million)

2004									
October	5 780.7	4 124.5	3 383.1	1 243.4	1 705.5	358.9	172.2	315.8	17 084.2
November	5 854.5	4 165.3	3 384.5	1 265.6	1 744.0	365.5	163.4	318.2	17 261.0
December	7 330.3	5 301.7	4 163.5	1 590.8	2 205.6	475.4	185.5	399.7	21 652.6
2005									
January	5 576.8	3 860.4	3 283.1	1 185.8	1 623.6	359.6	146.8	294.5	16 330.6
February	4 995.2	3 589.0	2 920.5	1 087.5	1 497.3	333.3	143.4	274.2	14 840.5
March	5 523.0	3 967.5	3 228.2	1 223.8	1 648.9	367.6	159.7	301.1	16 419.8
April	5 396.3	3 915.3	3 174.6	1 170.5	1 638.2	349.3	159.4	300.7	16 104.2
May	5 498.1	4 006.3	3 184.3	1 169.4	1 651.1	343.8	165.3	307.9	16 326.2
June	5 521.9	3 978.5	3 264.2	1 181.9	1 676.0	345.8	173.3	311.8	16 453.4
July	5 566.1	3 997.1	3 409.9	1 221.4	1 702.8	357.3	182.7	313.1	16 750.3
August	5 537.0	3 971.1	3 408.6	1 197.8	1 706.3	356.6	187.6	313.0	16 678.0
September	5 616.5	4 016.0	3 418.0	1 201.6	1 709.7	360.1	180.6	313.8	16 816.4
October	5 868.1	4 127.2	3 556.2	1 222.9	1 777.6	379.0	176.8	323.9	17 431.7
November	6 040.0	4 244.6	3 608.2	1 279.5	1 841.8	399.1	168.7	338.6	17 920.6
December	7 547.6	5 361.2	4 509.4	1 605.9	2 340.7	513.0	193.8	419.5	22 491.3

SEASONALLY ADJUSTED (\$ million)

2004									
October	5 638.6	4 055.1	3 293.2	1 217.8	1 667.0	354.6	164.6	310.8	16 701.9
November	5 638.9	4 025.4	3 310.9	1 221.6	1 682.2	354.3	164.3	307.7	16 705.4
December	5 631.9	4 004.3	3 228.3	1 216.1	1 680.9	357.7	165.1	311.5	16 595.9
2005									
January	5 687.7	4 009.6	3 311.5	1 224.8	1 671.8	366.5	167.3	311.5	16 750.8
February	5 689.4	4 049.8	3 338.8	1 244.3	1 686.8	366.7	171.8	310.4	16 857.9
March	5 709.9	4 036.7	3 348.4	1 238.0	1 670.9	362.0	169.4	309.5	16 844.7
April	5 590.4	4 072.4	3 328.4	1 197.4	1 706.3	358.5	168.6	310.5	16 732.6
May	5 688.2	4 137.6	3 349.5	1 219.5	1 723.1	363.7	168.7	314.9	16 965.4
June	5 780.1	4 138.6	3 384.2	1 228.0	1 747.6	365.5	168.5	317.5	17 129.9
July	5 705.7	4 106.4	3 442.3	1 245.9	1 750.8	372.0	168.3	316.3	17 107.7
August	5 716.7	4 123.5	3 465.1	1 248.1	1 769.8	380.1	171.8	320.8	17 195.9
September	5 717.9	4 122.9	3 441.2	1 229.0	1 757.1	374.5	171.1	323.1	17 137.0
October	5 753.3	4 103.1	3 506.9	1 220.7	1 763.6	381.1	170.4	320.9	17 219.9
November	5 789.6	4 074.3	3 481.0	1 221.2	1 760.4	381.1	168.4	325.3	17 201.3
December	5 805.1	4 078.8	3 503.5	1 229.4	1 769.9	383.9	172.1	324.6	17 267.1

TREND ESTIMATES (\$ million)

2004									
October	5 635.1	4 019.4	3 310.8	1 217.9	1 677.2	355.1	164.5	309.4	16 689.4
November	5 643.8	4 023.1	3 299.8	1 221.4	1 678.0	357.2	165.2	309.9	16 698.4
December	5 653.6	4 023.0	3 295.8	1 224.8	1 677.0	359.6	166.4	310.1	16 710.3
2005									
January	5 662.5	4 026.6	3 299.5	1 226.4	1 677.4	361.5	167.7	310.2	16 731.8
February	5 669.5	4 038.3	3 310.0	1 225.8	1 681.3	362.4	168.6	310.5	16 766.5
March	5 676.4	4 058.4	3 327.5	1 224.7	1 690.7	362.7	169.1	311.1	16 820.5
April	5 684.5	4 082.9	3 347.9	1 224.8	1 705.1	363.3	169.2	312.2	16 889.9
May	5 693.4	4 105.8	3 370.0	1 226.7	1 721.9	364.7	169.2	313.9	16 965.7
June	5 703.2	4 121.0	3 394.4	1 229.7	1 738.4	367.3	169.3	315.9	17 039.1
July	5 715.2	4 125.5	3 419.7	1 232.6	1 750.9	370.9	169.5	318.1	17 102.3
August	5 729.0	4 121.0	3 445.0	1 234.2	1 758.3	374.6	169.9	320.0	17 151.9
September	5 742.5	4 111.2	3 465.9	1 233.2	1 761.9	377.7	170.3	321.5	17 184.1
October	5 756.7	4 100.6	3 482.4	1 230.1	1 764.4	380.1	170.5	322.9	17 207.6
November	5 771.8	4 090.1	3 496.5	1 226.6	1 766.5	382.0	170.7	324.1	17 227.9
December	5 786.0	4 081.9	3 507.2	1 223.1	1 767.3	383.4	170.9	325.2	17 243.3

RETAIL TURNOVER PERCENTAGE CHANGE, By state

Month	New South Wales	Victoria	Queensland	South Australia	Western Australia	Tasmania	Northern Territory	Australian Capital Territory	Australia
ORIGINAL (% change from preceding month)									
2004									
October	4.8	6.0	1.2	5.1	4.0	5.9	-1.1	5.5	4.3
November	1.3	1.0	0.0	1.8	2.3	1.8	-5.1	0.7	1.0
December	25.2	27.3	23.0	25.7	26.5	30.1	13.5	25.6	25.4
2005									
January	-23.9	-27.2	-21.1	-25.5	-26.4	-24.4	-20.9	-26.3	-24.6
February	-10.4	-7.0	-11.0	-8.3	-7.8	-7.3	-2.3	-6.9	-9.1
March	10.6	10.5	10.5	12.5	10.1	10.3	11.4	9.8	10.6
April	-2.3	-1.3	-1.7	-4.4	-0.6	-5.0	-0.2	-0.1	-1.9
May	1.9	2.3	0.3	-0.1	0.8	-1.6	3.7	2.4	1.4
June	0.4	-0.7	2.5	1.1	1.5	0.6	4.8	1.3	0.8
July	0.8	0.5	4.5	3.3	1.6	3.3	5.4	0.4	1.8
August	-0.5	-0.6	0.0	-1.9	0.2	-0.2	2.7	0.0	-0.4
September	1.4	1.1	0.3	0.3	0.2	1.0	-3.7	0.3	0.8
October	4.5	2.8	4.0	1.8	4.0	5.3	-2.1	3.2	3.7
November	2.9	2.8	1.5	4.6	3.6	5.3	-4.6	4.6	2.8
December	25.0	26.3	25.0	25.5	27.1	28.5	14.9	23.9	25.5
SEASONALLY ADJUSTED (% change from preceding month)									
2004									
October	0.4	1.0	-2.1	-0.1	-1.5	0.3	-0.4	0.7	-0.2
November	0.0	-0.7	0.5	0.3	0.9	-0.1	-0.2	-1.0	0.0
December	-0.1	-0.5	-2.5	-0.5	-0.1	1.0	0.5	1.2	-0.7
2005									
January	1.0	0.1	2.6	0.7	-0.5	2.5	1.3	0.0	0.9
February	0.0	1.0	0.8	1.6	0.9	0.0	2.7	-0.3	0.6
March	0.4	-0.3	0.3	-0.5	-0.9	-1.3	-1.4	-0.3	-0.1
April	-2.1	0.9	-0.6	-3.3	2.1	-1.0	-0.4	0.3	-0.7
May	1.8	1.6	0.6	1.8	1.0	1.5	0.1	1.4	1.4
June	1.6	0.0	1.0	0.7	1.4	0.5	-0.1	0.8	1.0
July	-1.3	-0.8	1.7	1.5	0.2	1.8	-0.1	-0.4	-0.1
August	0.2	0.4	0.7	0.2	1.1	2.2	2.1	1.4	0.5
September	0.0	0.0	-0.7	-1.5	-0.7	-1.5	-0.4	0.7	-0.3
October	0.6	-0.5	1.9	-0.7	0.4	1.8	-0.4	-0.7	0.5
November	0.6	-0.7	-0.7	0.0	-0.2	0.0	-1.2	1.4	-0.1
December	0.3	0.1	0.6	0.7	0.5	0.7	2.2	-0.2	0.4
TREND ESTIMATES (% change from preceding month)									
2004									
October	0.1	0.3	-0.4	0.2	0.2	0.4	0.1	0.2	0.1
November	0.2	0.1	-0.3	0.3	0.0	0.6	0.4	0.1	0.1
December	0.2	0.0	-0.1	0.3	-0.1	0.7	0.7	0.1	0.1
2005									
January	0.2	0.1	0.1	0.1	0.0	0.5	0.8	0.1	0.1
February	0.1	0.3	0.3	0.0	0.2	0.2	0.5	0.1	0.2
March	0.1	0.5	0.5	-0.1	0.6	0.1	0.3	0.2	0.3
April	0.1	0.6	0.6	0.0	0.9	0.2	0.1	0.4	0.4
May	0.2	0.6	0.7	0.2	1.0	0.4	0.0	0.5	0.4
June	0.2	0.4	0.7	0.2	1.0	0.7	0.0	0.6	0.4
July	0.2	0.1	0.7	0.2	0.7	1.0	0.1	0.7	0.4
August	0.2	-0.1	0.7	0.1	0.4	1.0	0.2	0.6	0.3
September	0.2	-0.2	0.6	-0.1	0.2	0.8	0.2	0.5	0.2
October	0.2	-0.3	0.5	-0.3	0.1	0.6	0.1	0.4	0.1
November	0.3	-0.3	0.4	-0.3	0.1	0.5	0.1	0.4	0.1
December	0.2	-0.2	0.3	-0.3	0.0	0.4	0.1	0.3	0.1

RETAIL TURNOVER, By Industry Group(a)—New South Wales

Month	Food retailing	Department stores	Clothing and soft good retailing	Household good retailing	Recreational good retailing	Other retailing	Hospitality and services	Total
ORIGINAL (\$ million)								
2004								
October	2 213.9	452.9	382.1	789.0	208.7	582.2	1 151.9	5 780.7
November	2 185.5	525.2	394.0	834.8	221.0	595.3	1 098.8	5 854.5
December	2 542.4	844.9	567.4	1 009.3	318.1	791.7	1 256.6	7 330.3
2005								
January	2 194.9	417.5	393.1	776.0	216.6	515.8	1 062.7	5 576.8
February	2 029.1	342.9	301.4	686.1	200.0	486.6	949.1	4 995.2
March	2 224.2	435.3	375.5	718.0	209.6	515.8	1 044.7	5 523.0
April	2 143.7	377.9	355.8	727.7	198.0	502.1	1 091.1	5 396.3
May	2 123.3	421.1	397.3	766.0	197.1	503.5	1 089.9	5 498.1
June	2 099.0	480.2	394.1	785.8	197.3	498.1	1 067.5	5 521.9
July	2 232.9	415.3	360.4	781.1	207.1	481.3	1 087.9	5 566.1
August	2 234.0	400.6	346.4	786.3	202.2	501.6	1 065.9	5 537.0
September	2 231.9	428.3	377.3	786.4	201.2	505.3	1 086.1	5 616.5
October	2 353.9	435.4	395.1	793.1	198.1	513.9	1 178.6	5 868.1
November	2 334.2	516.2	403.8	849.0	209.7	557.8	1 169.3	6 040.0
December	2 715.7	838.8	555.4	1 078.1	297.2	756.9	1 305.4	7 547.6
SEASONALLY ADJUSTED (\$ million)								
2004								
October	2 140.5	463.5	374.9	764.2	218.9	574.8	1 101.8	5 638.6
November	2 173.3	465.4	382.8	774.4	213.3	545.5	1 084.1	5 638.9
December	2 180.6	450.9	380.8	761.7	228.2	535.3	1 094.3	5 631.9
2005								
January	2 155.3	475.6	393.3	801.1	224.5	567.2	1 070.7	5 687.7
February	2 198.1	475.5	387.6	788.3	220.0	561.8	1 058.1	5 689.4
March	2 204.3	482.8	396.8	773.0	214.3	561.1	1 077.6	5 709.9
April	2 182.3	408.5	372.5	789.3	212.6	544.6	1 080.6	5 590.4
May	2 190.5	454.4	387.8	800.3	214.4	526.4	1 114.4	5 688.2
June	2 230.6	479.5	397.7	807.0	212.6	537.3	1 115.4	5 780.1
July	2 262.4	462.7	387.0	789.2	206.7	512.9	1 084.9	5 705.7
August	2 282.8	464.0	392.1	797.9	202.2	510.8	1 067.0	5 716.7
September	2 265.2	459.1	394.2	797.6	205.3	504.9	1 091.7	5 717.9
October	2 299.7	449.8	390.4	775.4	205.0	502.2	1 130.7	5 753.3
November	2 299.6	450.1	382.0	794.0	204.8	510.5	1 148.6	5 789.6
December	2 307.1	447.3	371.9	808.7	213.1	517.4	1 139.6	5 805.1
TREND ESTIMATES (\$ million)								
2004								
October	2 164.8	464.5	379.1	760.6	217.7	560.4	1 086.8	5 635.1
November	2 166.7	464.6	381.6	768.9	219.6	557.4	1 083.4	5 643.8
December	2 170.8	466.4	384.4	776.0	221.0	556.2	1 078.9	5 653.6
2005								
January	2 175.7	469.1	386.6	781.7	221.2	555.9	1 076.3	5 662.5
February	2 180.9	471.5	387.7	785.9	220.1	555.1	1 077.3	5 669.5
March	2 188.1	472.7	387.9	789.0	217.9	552.3	1 081.6	5 676.4
April	2 198.2	472.3	387.9	792.3	215.0	546.4	1 086.9	5 684.5
May	2 211.9	470.5	388.4	795.2	212.1	537.4	1 090.8	5 693.4
June	2 229.6	467.7	389.8	796.3	209.4	526.7	1 092.6	5 703.2
July	2 248.4	464.6	391.2	795.9	207.4	517.7	1 094.1	5 715.2
August	2 266.2	461.5	391.4	794.7	206.0	512.1	1 097.5	5 729.0
September	2 281.3	458.0	390.0	793.0	205.4	509.0	1 105.0	5 742.5
October	2 292.7	454.2	387.0	792.7	205.6	507.6	1 116.0	5 756.7
November	2 301.6	450.7	383.4	793.5	206.4	507.6	1 127.7	5 771.8
December	2 307.0	446.7	379.6	795.2	207.6	508.1	1 139.4	5 786.0

(a) See paragraph 5 of the Explanatory Notes.

RETAIL TURNOVER, By Industry Group(a)—Victoria

Month	Food retailing	Department stores	Clothing and soft good retailing	Household good retailing	Recreational good retailing	Other retailing	Hospitality and services	Total
ORIGINAL (\$ million)								
2004								
October	1 660.1	320.5	283.7	670.6	^ 144.0	496.2	549.3	4 124.5
November	1 641.0	361.7	281.2	681.7	^ 146.5	514.1	539.2	4 165.3
December	1 909.6	611.5	393.7	828.6	222.8	727.2	608.3	5 301.7
2005								
January	1 630.0	294.3	257.7	636.8	137.8	402.4	501.4	3 860.4
February	1 524.7	254.4	236.9	569.5	126.5	414.1	462.8	3 589.0
March	1 694.3	311.3	272.5	603.2	^ 139.6	442.5	504.1	3 967.5
April	1 661.3	280.0	275.9	622.4	^ 137.9	422.4	515.4	3 915.3
May	1 631.2	311.0	308.7	657.1	^ 135.0	465.4	497.9	4 006.3
June	1 583.5	350.6	296.1	682.7	^ 139.4	436.2	490.0	3 978.5
July	1 669.0	311.6	273.2	629.1	^ 136.5	437.3	540.3	3 997.1
August	1 666.6	284.1	266.9	631.6	141.2	449.8	531.0	3 971.1
September	1 673.4	300.8	290.2	637.8	139.1	438.2	536.4	4 016.0
October	1 733.6	310.4	297.4	645.2	140.4	460.9	539.5	4 127.2
November	1 726.6	358.1	292.2	677.6	154.0	490.9	545.2	4 244.6
December	2 014.2	605.9	392.8	835.9	236.1	675.6	600.7	5 361.2
SEASONALLY ADJUSTED (\$ million)								
2004								
October	1 629.0	332.4	281.1	654.2	148.8	474.6	535.1	4 055.1
November	1 639.7	326.7	271.0	641.3	142.2	473.3	531.2	4 025.4
December	1 629.4	325.3	279.1	641.8	138.4	469.6	520.8	4 004.3
2005								
January	1 616.7	340.5	285.2	647.2	141.3	466.7	512.0	4 009.6
February	1 638.6	349.7	298.5	636.1	145.6	473.7	507.6	4 049.8
March	1 660.6	339.3	295.5	643.8	146.0	461.3	490.3	4 036.7
April	1 690.7	303.2	260.7	665.0	149.4	476.6	526.8	4 072.4
May	1 672.8	330.8	293.6	672.7	148.9	492.2	526.6	4 137.6
June	1 673.9	337.3	293.4	684.9	150.8	475.5	522.8	4 138.6
July	1 687.0	337.5	289.0	654.8	146.1	469.9	522.1	4 106.4
August	1 701.1	338.9	289.0	655.4	146.3	465.0	527.8	4 123.5
September	1 701.1	332.5	305.5	648.5	143.9	446.5	544.8	4 122.9
October	1 723.0	325.2	291.7	639.4	147.5	446.2	530.1	4 103.1
November	1 711.6	320.3	283.5	642.3	147.8	441.1	527.6	4 074.3
December	1 719.3	322.9	279.8	641.4	148.4	446.1	521.0	4 078.8
TREND ESTIMATES (\$ million)								
2004								
October	1 623.1	331.8	280.9	635.8	147.0	473.8	527.3	4 019.4
November	1 627.9	332.9	280.7	641.6	144.8	471.5	525.0	4 023.1
December	1 633.7	334.3	282.1	643.3	143.0	469.7	520.0	4 023.0
2005								
January	1 640.7	335.6	284.7	644.5	142.7	469.5	514.4	4 026.6
February	1 648.8	335.9	287.8	647.9	143.9	470.8	510.8	4 038.3
March	1 658.3	335.5	289.6	653.8	146.0	473.6	510.4	4 058.4
April	1 667.8	334.8	290.2	660.8	147.8	476.6	513.4	4 082.9
May	1 676.5	334.3	290.5	666.3	148.6	477.7	518.6	4 105.8
June	1 684.0	334.2	291.2	667.4	148.4	475.6	524.4	4 121.0
July	1 690.5	334.3	292.4	663.9	147.5	469.9	528.7	4 125.5
August	1 697.0	333.8	293.3	657.2	146.8	462.2	530.8	4 121.0
September	1 704.3	331.6	292.7	650.1	146.5	454.3	531.0	4 111.2
October	1 711.2	328.3	290.8	644.6	146.6	448.0	530.6	4 100.6
November	1 717.0	324.8	288.0	640.5	146.9	443.2	529.6	4 090.1
December	1 721.1	321.7	285.4	637.5	147.3	440.5	528.3	4 081.9

^ estimate has a relative standard error of 10% to less than 25% and should be used with caution

(a) See paragraph 5 of the Explanatory Notes.

RETAIL TURNOVER, By Industry Group(a)—Queensland

Month	Food retailing	Department stores	Clothing and soft good retailing	Household good retailing	Recreational good retailing	Other retailing	Hospitality and services	Total
ORIGINAL (\$ million)								
2004								
October	1 316.6	247.6	245.9	490.7	^ 147.6	385.2	549.5	3 383.1
November	1 274.2	273.3	245.4	518.3	^ 150.0	399.5	523.8	3 384.5
December	1 455.5	440.9	330.4	578.8	^ 215.4	543.9	598.5	4 163.5
2005								
January	1 296.9	226.4	256.3	474.2	^ 159.1	340.3	529.7	3 283.1
February	1 186.4	178.3	180.4	414.8	144.2	330.8	485.7	2 920.5
March	1 325.3	223.6	210.5	435.9	^ 154.5	346.5	531.8	3 228.2
April	1 297.4	195.7	223.6	424.7	^ 156.5	328.2	548.4	3 174.6
May	1 272.6	217.2	229.3	434.8	^ 155.0	328.8	546.6	3 184.3
June	1 275.0	250.9	245.3	461.1	^ 153.3	327.5	551.2	3 264.2
July	1 343.5	232.5	247.7	497.1	^ 150.6	342.2	596.3	3 409.9
August	1 345.2	224.3	253.6	495.6	^ 154.5	349.1	586.3	3 408.6
September	1 336.9	239.4	276.2	488.2	^ 154.3	333.8	589.3	3 418.0
October	1 359.2	239.5	277.0	517.7	^ 144.4	364.8	653.6	3 556.2
November	1 336.2	275.3	263.9	540.3	^ 150.1	387.9	654.5	3 608.2
December	1 503.8	455.6	385.3	652.8	207.9	529.7	774.4	4 509.4
SEASONALLY ADJUSTED (\$ million)								
2004								
October	1 290.7	248.4	233.4	475.7	149.2	377.1	518.8	3 293.2
November	1 299.7	245.1	236.4	489.2	146.8	379.8	513.9	3 310.9
December	1 282.3	237.5	226.6	454.7	151.4	369.7	506.2	3 228.3
2005								
January	1 284.2	252.1	240.6	473.6	160.1	368.8	532.0	3 311.5
February	1 297.7	247.7	234.8	468.4	160.5	389.1	540.5	3 338.8
March	1 305.4	249.5	245.8	465.0	162.2	370.8	549.6	3 348.4
April	1 309.7	226.6	243.5	467.4	174.2	348.6	558.4	3 328.4
May	1 311.3	246.5	247.4	458.7	166.8	346.6	572.3	3 349.5
June	1 319.9	251.2	254.1	471.5	161.5	345.4	580.7	3 384.2
July	1 334.1	250.6	255.5	496.0	156.5	359.6	590.0	3 442.3
August	1 345.0	252.6	268.5	498.6	156.5	352.6	591.2	3 465.1
September	1 341.5	245.2	262.4	490.4	154.1	350.9	596.7	3 441.2
October	1 355.0	243.6	260.4	507.0	148.1	363.3	629.5	3 506.9
November	1 344.4	241.4	256.2	506.6	147.3	354.6	630.6	3 481.0
December	1 330.6	241.1	262.3	517.1	145.8	360.6	646.1	3 503.5
TREND ESTIMATES (\$ million)								
2004								
October	1 302.9	246.9	234.5	473.5	148.0	384.9	520.4	3 310.8
November	1 294.9	246.7	233.8	473.4	149.8	382.9	519.1	3 299.8
December	1 290.3	246.0	234.2	472.1	152.9	379.4	521.2	3 295.8
2005								
January	1 290.2	245.0	235.7	469.2	156.8	374.8	526.9	3 299.5
February	1 293.9	244.0	238.1	465.9	160.4	369.8	536.4	3 310.0
March	1 300.2	243.5	241.3	464.4	162.8	364.4	548.5	3 327.5
April	1 307.7	244.0	245.3	465.9	163.9	358.7	560.0	3 347.9
May	1 315.8	245.2	249.8	470.2	163.5	353.5	569.8	3 370.0
June	1 324.6	246.8	254.2	476.6	161.7	350.6	578.3	3 394.4
July	1 332.5	248.2	257.8	484.1	159.0	350.5	587.0	3 419.7
August	1 339.0	248.5	260.2	492.0	155.9	352.9	596.9	3 445.0
September	1 343.2	247.3	261.4	498.8	152.8	355.4	607.8	3 465.9
October	1 345.0	245.2	261.6	504.6	150.0	357.1	619.1	3 482.4
November	1 345.1	242.9	261.5	509.5	147.6	358.4	629.9	3 496.5
December	1 343.7	241.0	260.9	512.9	145.9	359.3	639.3	3 507.2

^ estimate has a relative standard error of 10% to less than 25% and should be used with caution

(a) See paragraph 5 of the Explanatory Notes.

RETAIL TURNOVER, By Industry Group(a)—South Australia

Month	Food retailing	Department stores	Clothing and soft good retailing	Household good retailing	Recreational good retailing	Other retailing	Hospitality and services	Total
ORIGINAL (\$ million)								
2004								
October	513.3	110.7	62.2	191.2	^ 38.4	122.0	205.7	1 243.4
November	508.3	123.0	59.6	199.3	^ 42.9	136.2	196.4	1 265.6
December	600.5	191.0	81.2	241.0	^ 67.6	181.8	227.7	1 590.8
2005								
January	495.1	105.9	53.8	184.9	^ 37.4	116.8	192.1	1 185.8
February	473.7	86.6	47.7	159.6	^ 36.8	107.2	176.0	1 087.5
March	535.9	104.4	54.6	174.8	^ 41.5	113.7	198.9	1 223.8
April	501.1	94.1	56.2	172.7	^ 35.5	113.0	197.9	1 170.5
May	502.7	101.8	59.1	168.6	^ 33.9	115.6	187.7	1 169.4
June	496.8	118.3	61.8	175.9	^ 35.2	109.7	184.1	1 181.9
July	521.5	108.1	58.6	172.0	^ 40.5	114.2	206.6	1 221.4
August	527.1	98.4	54.6	165.2	^ 37.4	118.4	196.6	1 197.8
September	529.7	101.0	58.1	161.9	^ 36.7	116.6	197.5	1 201.6
October	529.0	103.8	65.4	167.6	^ 37.3	121.8	198.0	1 222.9
November	535.4	124.5	66.6	176.3	^ 41.0	137.7	198.2	1 279.5
December	627.5	198.4	84.9	225.3	^ 64.8	176.4	228.7	1 605.9
SEASONALLY ADJUSTED (\$ million)								
2004								
October	502.9	113.9	58.0	184.7	40.2	122.6	195.5	1 217.8
November	505.9	111.1	57.5	184.7	41.1	125.6	195.8	1 221.6
December	509.7	104.8	56.6	185.3	40.9	127.7	191.1	1 216.1
2005								
January	502.1	119.8	56.8	187.1	40.2	126.7	192.0	1 224.8
February	518.9	119.9	62.5	183.5	41.4	124.3	193.8	1 244.3
March	513.4	114.7	59.8	193.4	40.4	121.3	194.9	1 238.0
April	515.1	99.9	51.8	176.3	38.3	116.2	199.8	1 197.4
May	517.6	111.0	59.4	175.4	37.6	119.2	199.4	1 219.5
June	520.4	114.1	60.3	179.3	38.5	115.6	199.7	1 228.0
July	527.4	113.3	61.2	175.0	42.4	120.2	206.4	1 245.9
August	536.2	113.9	63.2	171.2	40.7	121.1	201.9	1 248.1
September	533.7	111.8	62.3	167.2	39.1	120.3	194.7	1 229.0
October	525.7	108.4	62.1	168.1	39.8	122.7	193.9	1 220.7
November	527.7	109.3	61.5	164.5	39.4	125.4	193.3	1 221.2
December	531.8	108.7	60.6	170.6	39.6	125.6	192.5	1 229.4
TREND ESTIMATES (\$ million)								
2004								
October	501.5	112.5	(b) 57.4	183.9	40.4	124.2	194.3	1 217.9
November	504.3	113.0	57.8	185.3	40.5	125.3	193.3	1 221.4
December	507.2	113.4	58.1	186.3	40.6	125.7	193.1	1 224.8
2005								
January	509.8	113.5	58.3	186.5	40.7	125.2	193.2	1 226.4
February	511.9	113.0	58.4	185.7	40.7	123.5	194.0	1 225.8
March	513.7	112.3	58.5	184.1	40.9	121.4	195.8	1 224.7
April	516.4	111.6	58.8	181.9	(b) 38.1	119.4	198.2	1 224.8
May	519.8	111.2	59.4	179.2	38.7	118.1	200.3	1 226.7
June	523.6	111.3	60.1	176.3	39.4	117.9	201.5	1 229.7
July	526.8	111.8	61.0	173.5	39.9	118.7	201.2	1 232.6
August	529.1	112.2	61.8	171.3	40.1	120.1	199.7	1 234.2
September	530.4	111.7	62.1	169.6	40.1	121.6	197.7	1 233.2
October	530.8	110.6	62.1	168.1	39.9	123.0	195.5	1 230.1
November	530.8	109.5	61.8	167.1	39.7	124.2	193.7	1 226.6
December	530.4	108.5	61.5	166.4	39.5	125.4	192.0	1 223.1

^ estimate has a relative standard error of 10% to less than 25% and should be used with caution

(b) Break in series. See the 'Trend Estimates' section of the Explanatory Notes.

(a) See paragraph 5 of the Explanatory Notes.

Month	Food retailing	Department stores	Clothing and soft good retailing	Household good retailing	Recreational good retailing	Other retailing	Hospitality and services	Total
ORIGINAL (\$ million)								
2004								
October	713.1	131.1	92.5	295.3	^ 81.7	186.2	205.5	1 705.5
November	711.6	149.6	93.6	297.8	^ 87.4	192.9	211.2	1 744.0
December	858.3	243.9	131.9	366.0	^ 124.8	253.8	227.0	2 205.6
2005								
January	686.3	119.9	84.0	288.3	^ 96.4	154.4	194.3	1 623.6
February	648.2	101.9	73.6	255.3	^ 85.2	140.4	192.7	1 497.3
March	725.8	126.0	82.2	272.2	^ 90.3	152.7	199.7	1 648.9
April	706.3	121.9	93.7	273.4	^ 94.3	149.5	199.0	1 638.2
May	711.7	121.8	93.2	277.4	^ 90.1	156.9	200.0	1 651.1
June	703.3	149.2	100.8	288.1	^ 91.2	151.7	191.8	1 676.0
July	745.2	127.1	89.4	298.3	^ 95.3	141.4	206.1	1 702.8
August	755.2	121.1	85.4	303.2	^ 94.9	142.9	203.7	1 706.3
September	760.6	123.4	85.7	293.0	^ 95.5	144.4	207.2	1 709.7
October	769.3	133.1	100.2	315.8	^ 91.1	147.7	220.3	1 777.6
November	768.7	160.2	105.4	325.6	^ 102.8	158.6	220.6	1 841.8
December	910.6	264.1	144.8	419.7	^ 151.7	216.0	233.9	2 340.7
SEASONALLY ADJUSTED (\$ million)								
2004								
October	705.1	134.1	90.0	279.6	87.6	177.9	192.8	1 667.0
November	712.0	133.2	88.5	286.1	87.0	175.6	199.9	1 682.2
December	714.9	131.4	90.0	285.2	87.0	174.0	198.3	1 680.9
2005								
January	693.9	138.1	89.1	286.3	93.8	170.8	199.7	1 671.8
February	706.4	138.5	91.9	290.8	91.0	160.9	207.4	1 686.8
March	700.2	137.3	90.9	289.4	94.6	161.7	196.8	1 670.9
April	723.4	133.9	94.7	293.6	97.9	160.6	202.4	1 706.3
May	734.4	131.1	91.5	297.1	98.2	162.0	208.9	1 723.1
June	741.0	146.8	100.0	287.4	98.0	164.4	210.0	1 747.6
July	754.9	138.6	93.7	304.6	97.8	152.1	209.0	1 750.8
August	767.3	141.6	94.0	313.0	96.0	148.9	209.0	1 769.8
September	771.4	138.1	92.1	303.6	100.4	145.1	206.3	1 757.1
October	771.4	136.7	97.9	304.2	98.9	145.5	209.1	1 763.6
November	760.8	139.4	99.9	303.8	101.2	145.6	209.8	1 760.4
December	758.2	140.1	97.4	320.6	106.3	145.9	201.3	1 769.9
TREND ESTIMATES (\$ million)								
2004								
October	711.1	135.2	89.2	283.8	86.2	(b) 176.7	198.2	1 677.2
November	708.5	135.2	89.6	284.7	87.8	175.3	197.0	1 678.0
December	705.5	135.2	89.8	285.9	89.4	172.4	196.5	1 677.0
2005								
January	704.1	135.3	90.2	287.4	91.1	169.0	197.0	1 677.4
February	705.4	135.6	91.0	288.8	93.0	165.9	198.6	1 681.3
March	710.5	136.2	92.2	290.3	94.9	163.5	201.2	1 690.7
April	719.4	137.0	93.4	292.4	96.4	161.8	203.9	1 705.1
May	731.2	137.9	94.2	295.1	97.3	159.9	206.3	1 721.9
June	744.1	138.7	94.6	298.0	97.7	157.5	208.2	1 738.4
July	754.9	139.3	94.9	300.8	97.9	154.4	209.0	1 750.9
August	761.9	139.7	95.1	303.4	98.3	151.0	209.0	1 758.3
September	765.6	139.5	95.6	305.8	99.1	148.0	208.5	1 761.9
October	767.0	139.1	96.4	308.0	100.3	145.9	207.6	1 764.4
November	767.0	138.9	97.2	310.2	101.7	144.4	206.6	1 766.5
December	765.8	138.3	97.7	312.5	103.1	143.6	205.6	1 767.3

^ estimate has a relative standard error of 10% to less than 25% and should be used with caution

(a) See paragraph 5 of the Explanatory Notes.

(b) Break in series. See the 'Trend Estimates' section of the Explanatory Notes.

Month	Food retailing	Department stores	Clothing and soft good retailing	Household good retailing	Recreational good retailing	Other retailing	Hospitality and services	Total
-------	-------------------	----------------------	--	--------------------------------	-----------------------------------	--------------------	--------------------------------	-------

ORIGINAL (\$ million)

2004								
October	146.8	np	13.9	61.2	^ 20.1	np	43.0	358.9
November	145.2	np	16.1	62.7	^ 20.0	np	43.4	365.5
December	172.1	np	24.0	81.1	^ 28.0	np	52.8	475.4
2005								
January	154.5	np	16.0	57.9	^ 19.9	np	43.7	359.6
February	139.6	np	^ 15.6	53.2	^ 20.5	np	43.3	333.3
March	153.0	np	17.5	59.5	^ 19.7	np	47.9	367.6
April	146.4	np	19.4	58.1	^ 20.0	np	42.7	349.3
May	142.2	np	18.2	59.1	^ 19.3	np	40.5	343.8
June	140.9	np	18.9	61.3	^ 18.9	np	39.4	345.8
July	148.5	np	^ 17.8	62.4	^ 21.1	np	40.1	357.3
August	147.2	np	17.4	65.0	^ 21.1	np	39.8	356.6
September	149.5	np	^ 18.7	65.0	^ 21.2	np	40.1	360.1
October	154.9	np	18.1	71.7	^ 21.8	np	44.3	379.0
November	156.5	np	21.2	72.9	^ 23.1	np	46.3	399.1
December	180.4	np	29.1	92.6	^ 34.3	np	57.5	513.0

SEASONALLY ADJUSTED (\$ million)

2004								
October	142.9	np	15.4	59.3	21.0	np	42.1	354.6
November	145.5	np	15.6	59.1	19.9	np	42.2	354.3
December	147.5	np	15.9	60.9	19.7	np	42.6	357.7
2005								
January	151.0	np	17.2	62.0	20.0	np	42.7	366.5
February	148.9	np	17.9	61.8	20.2	np	44.9	366.7
March	146.4	np	17.7	61.6	19.9	np	44.5	362.0
April	148.5	np	18.3	61.5	21.3	np	42.0	358.5
May	149.7	np	18.2	63.1	20.4	np	42.1	363.7
June	148.2	np	18.6	62.0	21.1	np	43.1	365.5
July	152.2	np	19.3	64.7	22.1	np	42.7	372.0
August	153.7	np	19.6	65.6	22.6	np	44.7	380.1
September	152.7	np	20.1	66.7	22.2	np	42.9	374.5
October	153.9	np	20.4	68.6	23.1	np	44.9	381.1
November	153.3	np	20.3	68.2	23.5	np	44.7	381.1
December	152.6	np	19.8	68.8	24.4	np	45.5	383.9

TREND ESTIMATES (\$ million)

2004								
October	144.2	np	16.4	59.5	20.8	np	41.6	355.1
November	145.7	np	16.3	59.9	20.5	np	42.2	357.2
December	147.1	np	16.4	60.5	20.2	np	42.8	359.6
2005								
January	148.1	np	16.8	61.1	20.0	np	43.3	361.5
February	148.5	np	17.3	61.5	20.0	np	43.5	362.4
March	148.6	np	17.8	61.8	20.2	np	43.4	362.7
April	148.7	np	18.2	62.1	20.6	np	43.2	363.3
May	149.2	np	18.5	62.5	21.0	np	42.9	364.7
June	150.1	np	18.8	63.3	21.4	np	42.9	367.3
July	151.3	np	19.2	64.4	21.8	np	43.1	370.9
August	152.3	np	19.6	65.6	22.2	np	43.5	374.6
September	152.9	np	19.9	66.7	22.7	np	44.0	377.7
October	153.3	np	20.1	67.7	23.1	np	44.4	380.1
November	153.5	np	20.2	68.4	23.6	np	44.8	382.0
December	153.6	np	20.3	69.1	23.9	np	45.1	383.4

^ estimate has a relative standard error of 10% to less than 25% and should be used with caution

np not available for publication but included in totals where applicable, unless otherwise indicated

(a) See paragraph 5 of the Explanatory Notes.

Month	Food retailing	Department stores	Clothing and soft good retailing	Household good retailing	Recreational good retailing	Other retailing	Hospitality and services	Total
ORIGINAL (\$ million)								
2004								
October	78.8	np	8.4	21.2	^ 6.2	np	^ 28.9	172.2
November	73.3	np	8.1	21.5	^ 5.5	np	^ 27.6	163.4
December	80.5	np	9.8	23.1	^ 7.3	np	^ 28.4	185.5
2005								
January	67.6	np	7.1	20.3	^ 5.3	np	^ 24.8	146.8
February	68.9	np	6.2	18.6	^ 5.1	np	^ 24.1	143.4
March	77.3	np	7.0	20.9	^ 5.8	np	^ 27.7	159.7
April	75.6	np	7.1	20.1	^ 6.0	np	^ 30.3	159.4
May	79.0	np	7.8	19.9	^ 5.8	np	^ 31.0	165.3
June	81.6	np	8.6	21.9	^ 6.2	np	^ 31.5	173.3
July	85.2	np	8.9	21.0	^ 6.1	np	34.7	182.7
August	85.6	np	8.9	22.4	^ 6.3	np	^ 35.8	187.6
September	81.5	np	8.6	21.4	^ 5.8	np	^ 35.3	180.6
October	79.0	np	8.4	22.3	^ 5.8	np	^ 34.6	176.8
November	74.0	np	7.7	23.1	^ 5.0	np	32.2	168.7
December	78.5	np	10.5	27.9	^ 6.5	np	35.1	193.8
SEASONALLY ADJUSTED (\$ million)								
2004								
October	76.3	np	8.0	20.5	6.0	np	26.9	164.6
November	76.5	np	8.2	20.7	5.9	np	27.3	164.3
December	77.9	np	7.6	19.8	6.1	np	27.5	165.1
2005								
January	76.1	np	8.4	21.5	6.3	np	29.4	167.3
February	80.1	np	8.3	21.4	6.2	np	30.0	171.8
March	77.8	np	8.3	22.5	6.2	np	30.3	169.4
April	77.8	np	8.1	20.9	6.3	np	32.0	168.6
May	79.0	np	8.1	20.5	6.1	np	31.2	168.7
June	78.3	np	8.0	21.0	6.1	np	30.5	168.5
July	78.6	np	8.0	21.2	5.7	np	29.7	168.3
August	79.0	np	7.9	21.5	5.7	np	32.1	171.8
September	77.8	np	8.0	21.3	5.4	np	32.6	171.1
October	77.5	np	8.0	21.4	5.6	np	33.1	170.4
November	76.2	np	7.8	22.2	5.3	np	31.9	168.4
December	76.1	np	8.1	23.5	5.2	np	33.8	172.1
TREND ESTIMATES (\$ million)								
2004								
October	77.2	np	8.2	20.2	5.9	np	27.2	164.5
November	77.1	np	8.1	20.4	6.0	np	27.7	165.2
December	77.3	np	8.1	20.6	6.1	np	28.3	166.4
2005								
January	77.6	np	8.1	20.9	6.2	np	29.1	167.7
February	78.0	np	8.2	21.0	6.2	np	29.9	168.6
March	78.3	np	8.2	21.0	6.2	np	30.5	169.1
April	78.5	np	8.2	21.0	6.2	np	30.8	169.2
May	78.6	np	8.1	20.9	6.1	np	31.0	169.2
June	78.6	np	8.0	21.0	5.9	np	31.0	169.3
July	78.5	np	8.0	21.0	5.8	np	31.2	169.5
August	78.3	np	8.0	21.3	5.7	np	31.6	169.9
September	77.8	np	8.0	21.6	5.5	np	32.0	170.3
October	77.3	np	8.0	21.9	5.4	np	32.5	170.5
November	76.8	np	8.0	22.3	5.3	np	32.9	170.7
December	76.4	np	8.0	22.6	5.3	np	33.3	170.9

^ estimate has a relative standard error of 10% to less than 25% and should be used with caution

np not available for publication but included in totals where applicable, unless otherwise indicated

(a) See paragraph 5 of the Explanatory Notes.

Month	Food retailing	Department stores	Clothing and soft good retailing	Household good retailing	Recreational good retailing	Other retailing	Hospitality and services	Total
ORIGINAL (\$ million)								
2004								
October	126.5	27.4	18.6	60.1	^ 13.7	25.0	^ 44.6	315.8
November	125.5	31.3	18.8	59.4	14.3	^ 26.7	^ 42.1	318.2
December	142.5	52.0	27.2	76.3	20.0	37.7	^ 44.0	399.7
2005								
January	122.9	25.2	18.7	57.8	^ 12.8	20.7	^ 36.4	294.5
February	117.4	21.2	14.8	49.4	15.2	20.9	^ 35.3	274.2
March	129.4	26.4	18.7	53.0	^ 14.1	22.0	37.7	301.1
April	126.6	24.8	18.9	51.4	^ 14.9	23.4	^ 40.7	300.7
May	128.0	27.9	19.6	52.6	^ 15.0	^ 24.4	^ 40.5	307.9
June	124.7	32.3	20.7	56.0	^ 14.5	^ 23.5	^ 40.0	311.8
July	126.0	25.1	17.5	58.9	17.9	^ 26.8	^ 40.9	313.1
August	128.2	24.7	16.3	59.5	^ 16.7	^ 28.3	39.4	313.0
September	127.4	25.4	19.2	59.3	^ 15.7	^ 28.3	38.6	313.8
October	130.8	26.2	20.8	65.4	^ 13.7	^ 26.8	40.3	323.9
November	130.7	34.1	20.9	70.3	13.9	^ 28.9	39.9	338.6
December	148.2	53.5	28.8	86.4	^ 19.8	^ 40.4	42.4	419.5
SEASONALLY ADJUSTED (\$ million)								
2004								
October	123.0	28.6	18.7	58.5	14.5	25.3	42.1	310.8
November	123.9	27.8	18.7	56.2	14.3	25.0	41.7	307.7
December	125.4	28.5	19.1	57.0	14.4	24.9	42.1	311.5
2005								
January	125.9	29.0	20.2	57.5	14.9	23.9	40.2	311.5
February	126.3	28.9	18.4	56.4	16.0	24.6	39.7	310.4
March	128.0	29.0	19.7	55.6	14.8	24.0	38.4	309.5
April	129.2	25.8	18.3	54.8	15.9	25.0	41.4	310.5
May	130.0	28.7	18.9	55.6	16.1	25.5	40.1	314.9
June	129.5	31.1	19.5	57.1	15.2	26.1	39.1	317.5
July	126.3	29.0	19.0	60.0	16.3	27.5	38.3	316.3
August	129.4	28.8	18.2	61.5	16.2	27.9	38.9	320.8
September	129.3	28.8	20.7	62.5	15.9	27.5	38.4	323.1
October	128.3	27.2	20.6	64.2	14.6	27.5	38.6	320.9
November	128.8	29.9	20.4	65.6	14.5	27.0	39.1	325.3
December	129.2	28.8	20.1	65.7	14.0	27.0	39.8	324.6
TREND ESTIMATES (\$ million)								
2004								
October	123.4	28.8	18.6	57.7	14.5	24.7	41.7	309.4
November	124.1	28.7	18.9	57.4	14.6	24.7	41.5	309.9
December	125.0	28.5	19.2	57.0	14.7	24.6	41.0	310.1
2005								
January	126.0	28.4	19.2	56.5	14.9	24.5	40.5	310.2
February	127.1	28.3	19.2	56.0	15.2	24.4	40.1	310.5
March	128.0	28.4	19.1	55.7	15.4	24.5	39.8	311.1
April	128.6	28.6	19.0	55.7	15.7	25.0	39.6	312.2
May	128.9	28.8	18.9	56.3	15.8	25.6	39.5	313.9
June	128.9	28.9	18.9	57.5	16.0	26.4	39.3	315.9
July	128.8	29.0	19.1	59.2	15.9	27.0	39.0	318.1
August	128.7	29.0	19.5	61.0	15.8	27.3	38.8	320.0
September	128.6	28.9	19.8	62.6	15.4	27.5	38.7	321.5
October	128.7	28.7	20.1	64.0	15.1	27.5	38.8	322.9
November	128.8	28.6	20.3	65.1	14.7	27.4	39.0	324.1
December	129.0	28.6	20.5	66.0	14.3	27.2	39.2	325.2

^ estimate has a relative standard error of 10% to less than 25% and should be used with caution

(a) See paragraph 5 of the Explanatory Notes.

QUARTERLY TURNOVER, Chain Volume Measures(a)—by Industry Group(b)

Quarter	Food retailing	Department stores	Clothing and soft good retailing	Household good retailing	Recreational good retailing	Other retailing	Hospitality and services	Total
ORIGINAL (\$ million)								
2003								
December	20 142.4	5 179.2	3 628.0	7 767.9	2 330.0	6 342.6	8 375.0	53 808.0
2004								
March	19 127.8	3 244.4	2 835.9	6 878.6	1 886.7	4 796.9	7 676.7	46 429.3
June	19 175.6	3 873.6	3 207.9	6 915.5	1 841.0	4 885.6	7 629.2	47 528.0
September	19 650.5	3 725.4	3 133.3	7 290.5	1 986.5	5 236.0	7 721.1	48 743.4
December	20 882.8	5 318.4	3 850.7	8 681.8	2 354.9	6 424.5	8 254.0	55 767.1
2005								
March	19 264.1	3 552.8	3 095.0	7 365.2	1 984.4	4 810.0	7 265.1	47 336.6
June	19 282.4	3 804.3	3 402.8	7 635.3	1 961.7	4 790.5	7 561.6	48 438.5
September	19 995.0	3 717.7	3 330.6	7 879.8	2 000.9	4 800.8	7 752.0	49 476.9
December	21 355.2	5 318.6	4 092.3	9 205.4	2 364.6	5 916.6	8 559.2	56 811.9
SEASONALLY ADJUSTED (\$ million)								
2003								
December	19 072.5	3 918.4	3 111.7	6 909.5	2 012.0	5 329.2	7 855.3	48 195.7
2004								
March	19 338.5	3 910.7	3 132.3	7 211.7	1 971.7	5 254.8	7 874.4	48 798.8
June	19 755.7	4 064.5	3 256.8	7 325.5	2 005.6	5 254.5	7 894.1	49 514.0
September	19 857.1	4 118.6	3 302.4	7 432.6	2 043.1	5 419.1	7 765.6	49 938.5
December	19 663.0	4 045.7	3 297.2	7 669.6	2 031.0	5 376.7	7 669.7	49 752.9
2005								
March	19 647.6	4 229.3	3 470.9	7 904.9	2 097.4	5 348.2	7 579.9	50 278.2
June	19 911.5	4 007.5	3 411.4	7 966.3	2 116.0	5 117.2	7 786.2	50 316.1
September	20 157.7	4 108.6	3 518.8	7 999.6	2 047.0	4 958.9	7 754.3	50 544.8
December	20 107.2	4 014.6	3 491.3	8 122.0	2 036.6	4 937.9	7 968.7	50 678.3
TREND ESTIMATES (\$ million)								
2003								
December	19 112.7	3 881.8	3 081.5	6 942.2	1 970.3	5 252.3	7 801.0	48 045.1
2004								
March	19 412.3	3 964.8	3 163.4	7 163.6	2 002.3	5 288.1	7 893.3	48 915.2
June	19 672.0	4 031.6	3 230.7	7 323.1	2 008.6	5 316.1	7 870.0	49 467.3
September	19 770.5	4 093.9	3 292.2	7 484.9	2 025.1	5 367.5	7 764.1	49 792.5
December	19 725.6	4 124.2	3 350.8	7 673.8	2 060.1	5 390.0	7 674.5	49 990.2
2005								
March	19 738.6	4 118.9	3 406.7	7 852.9	2 086.2	5 299.6	7 646.7	50 152.1
June	19 890.5	4 096.2	3 456.4	7 962.3	2 087.9	5 143.3	7 715.1	50 351.4
September	20 061.8	4 062.8	3 487.3	8 034.0	2 068.3	5 004.6	7 817.3	50 535.9
December	20 192.8	4 034.9	3 498.7	8 095.3	2 041.3	4 890.1	7 922.7	50 663.3

(a) Reference year for chain volume measures is 2003–04. See paragraph 31 of the Explanatory Notes.

(b) See paragraph 5 of the Explanatory Notes.

Quarter	Food retailing	Department stores	Clothing and soft good retailing	Household good retailing	Recreational good retailing	Other retailing	Hospitality and services	Total
ORIGINAL (% change from preceding quarter)								
2003								
December	8.0	52.6	28.8	18.3	26.3	28.2	10.8	17.6
2004								
March	-5.0	-37.4	-21.8	-11.4	-19.0	-24.4	-8.3	-13.7
June	0.3	19.4	13.1	0.5	-2.4	1.8	-0.6	2.4
September	2.5	-3.8	-2.3	5.4	7.9	7.2	1.2	2.6
December	6.3	42.8	22.9	19.1	18.5	22.7	6.9	14.4
2005								
March	-7.8	-33.2	-19.6	-15.2	-15.7	-25.1	-12.0	-15.1
June	0.1	7.1	9.9	3.7	-1.1	-0.4	4.1	2.3
September	3.7	-2.3	-2.1	3.2	2.0	0.2	2.5	2.1
December	6.8	43.1	22.9	16.8	18.2	23.2	10.4	14.8
SEASONALLY ADJUSTED (% change from preceding quarter)								
2003								
December	0.7	3.2	4.2	3.4	5.2	3.8	3.2	2.5
2004								
March	1.4	-0.2	0.7	4.4	-2.0	-1.4	0.2	1.3
June	2.2	3.9	4.0	1.6	1.7	0.0	0.2	1.5
September	0.5	1.3	1.4	1.5	1.9	3.1	-1.6	0.9
December	-1.0	-1.8	-0.2	3.2	-0.6	-0.8	-1.2	-0.4
2005								
March	-0.1	4.5	5.3	3.1	3.3	-0.5	-1.2	1.1
June	1.3	-5.2	-1.7	0.8	0.9	-4.3	2.7	0.1
September	1.2	2.5	3.1	0.4	-3.3	-3.1	-0.4	0.5
December	-0.3	-2.3	-0.8	1.5	-0.5	-0.4	2.8	0.3
TREND ESTIMATES (% change from preceding quarter)								
2003								
December	1.4	1.8	2.2	4.6	3.8	1.9	2.3	2.3
2004								
March	1.6	2.1	2.7	3.2	1.6	0.7	1.2	1.8
June	1.3	1.7	2.1	2.2	0.3	0.5	-0.3	1.1
September	0.5	1.5	1.9	2.2	0.8	1.0	-1.3	0.7
December	-0.2	0.7	1.8	2.5	1.7	0.4	-1.2	0.4
2005								
March	0.1	-0.1	1.7	2.3	1.3	-1.7	-0.4	0.3
June	0.8	-0.6	1.5	1.4	0.1	-2.9	0.9	0.4
September	0.9	-0.8	0.9	0.9	-0.9	-2.7	1.3	0.4
December	0.7	-0.7	0.3	0.8	-1.3	-2.3	1.3	0.3

(a) Reference year for chain volume measures is 2003-04. See paragraph 31 of the Explanatory Notes.

(b) See paragraph 5 of the Explanatory Notes.

QUARTERLY TURNOVER, Chain Volume Measures(a)—by State

Quarter	New South Wales	Victoria	Queensland	South Australia	Western Australia	Tasmania	Northern Territory	Australian Capital Territory	Australia
ORIGINAL (\$ million)									
2003									
December	18 415.4	12 954.6	10 585.4	3 969.5	5 230.8	1 141.1	493.5	1 018.1	53 808.0
2004									
March	15 608.7	11 330.0	9 169.5	3 430.2	4 598.4	1 007.5	416.5	867.4	46 429.3
June	16 126.5	11 391.9	9 437.5	3 498.0	4 692.6	1 005.4	479.2	896.8	47 528.0
September	16 410.0	11 637.4	9 875.2	3 537.7	4 845.8	1 008.9	527.4	901.1	48 743.4
December	18 864.4	13 572.5	10 885.1	4 081.6	5 624.1	1 190.6	518.0	1 030.8	55 767.1
2005									
March	15 959.5	11 410.3	9 375.2	3 480.5	4 747.8	1 050.4	445.3	867.5	47 336.6
June	16 252.7	11 861.1	9 523.2	3 490.0	4 879.3	1 026.6	490.5	915.1	48 438.5
September	16 408.4	11 863.3	10 136.5	3 551.6	4 995.1	1 055.6	538.4	928.0	49 476.9
December	19 070.4	13 551.7	11 480.2	4 020.4	5 833.3	1 266.3	525.8	1 063.9	56 811.9
SEASONALLY ADJUSTED (\$ million)									
2003									
December	16 481.6	11 550.7	9 533.1	3 556.1	4 668.3	1 019.3	468.0	918.3	48 195.7
2004									
March	16 429.9	11 886.1	9 654.9	3 601.7	4 801.1	1 033.8	466.7	921.1	48 798.8
June	16 803.8	11 856.7	9 879.6	3 633.4	4 900.9	1 052.4	488.5	921.0	49 514.0
September	16 825.9	12 015.8	9 990.2	3 643.6	4 994.3	1 057.6	488.9	922.2	49 938.5
December	16 804.0	12 063.9	9 770.6	3 636.7	5 002.8	1 057.3	490.1	927.4	49 752.9
2005									
March	16 974.3	12 112.8	9 965.1	3 699.0	5 008.2	1 086.1	503.5	929.1	50 278.2
June	16 882.4	12 288.7	9 932.9	3 610.6	5 091.6	1 075.5	498.6	935.7	50 316.1
September	16 778.1	12 209.1	10 215.9	3 643.9	5 147.6	1 104.7	499.0	946.5	50 544.8
December	16 975.6	12 080.9	10 284.4	3 586.9	5 178.6	1 121.7	496.7	953.6	50 678.3
TREND ESTIMATES (\$ million)									
2003									
December	16 384.5	11 558.9	9 468.6	3 539.7	4 683.1	1 017.3	464.8	924.2	48 045.1
2004									
March	16 575.6	11 792.3	9 723.4	3 596.2	4 798.1	1 038.1	474.0	920.1	48 915.2
June	16 708.6	11 927.3	9 856.4	3 630.1	4 903.3	1 048.3	482.0	920.5	49 467.3
September	16 815.3	11 992.6	9 902.3	3 646.4	4 972.3	1 057.5	489.4	923.1	49 792.5
December	16 888.5	12 067.1	9 888.8	3 656.9	5 004.5	1 065.2	495.0	925.7	49 990.2
2005									
March	16 887.0	12 167.0	9 901.0	3 658.7	5 034.8	1 073.9	498.3	930.2	50 152.1
June	16 880.3	12 208.5	10 011.9	3 645.0	5 082.5	1 087.0	499.9	937.1	50 351.4
September	16 876.0	12 197.0	10 157.2	3 621.8	5 138.0	1 102.1	498.9	945.2	50 535.9
December	16 885.2	12 146.2	10 284.3	3 595.9	5 184.5	1 115.4	496.6	952.9	50 663.3

(a) Reference year for chain volume measures is 2003–04. See paragraph 31 of the Explanatory Notes.

Quarter	New South Wales	Victoria	Queensland	South Australia	Western Australia	Tasmania	Northern Territory	Australian Capital Territory	Australia
ORIGINAL (% change from preceding quarter)									
2003									
December	17.0	19.3	17.1	19.0	17.8	20.8	0.2	11.9	17.6
2004									
March	-15.2	-12.5	-13.4	-13.6	-12.1	-11.7	-15.6	-14.8	-13.7
June	3.3	0.5	2.9	2.0	2.0	-0.2	15.0	3.4	2.4
September	1.8	2.2	4.6	1.1	3.3	0.4	10.1	0.5	2.6
December	15.0	16.6	10.2	15.4	16.1	18.0	-1.8	14.4	14.4
2005									
March	-15.4	-15.9	-13.9	-14.7	-15.6	-11.8	-14.0	-15.8	-15.1
June	1.8	4.0	1.6	0.3	2.8	-2.3	10.2	5.5	2.3
September	1.0	0.0	6.4	1.8	2.4	2.8	9.8	1.4	2.1
December	16.2	14.2	13.3	13.2	16.8	20.0	-2.3	14.6	14.8
SEASONALLY ADJUSTED (% change from preceding quarter)									
2003									
December	1.9	2.7	4.0	3.3	1.7	2.7	2.1	-1.4	2.5
2004									
March	-0.3	2.9	1.3	1.3	2.8	1.4	-0.3	0.3	1.3
June	2.3	-0.2	2.3	0.9	2.1	1.8	4.7	0.0	1.5
September	0.1	1.3	1.1	0.3	1.9	0.5	0.1	0.1	0.9
December	-0.1	0.4	-2.2	-0.2	0.2	0.0	0.3	0.6	-0.4
2005									
March	1.0	0.4	2.0	1.7	0.1	2.7	2.7	0.2	1.1
June	-0.5	1.5	-0.3	-2.4	1.7	-1.0	-1.0	0.7	0.1
September	-0.6	-0.6	2.8	0.9	1.1	2.7	0.1	1.2	0.5
December	1.2	-1.0	0.7	-1.6	0.6	1.5	-0.5	0.7	0.3
TREND ESTIMATES (% change from preceding quarter)									
2003									
December	1.5	2.6	3.6	1.6	2.4	3.3	1.6	-0.4	2.3
2004									
March	1.2	2.0	2.7	1.6	2.5	2.0	2.0	-0.5	1.8
June	0.8	1.1	1.4	0.9	2.2	1.0	1.7	0.1	1.1
September	0.6	0.5	0.5	0.4	1.4	0.9	1.5	0.3	0.7
December	0.4	0.6	-0.1	0.3	0.6	0.7	1.1	0.3	0.4
2005									
March	0.0	0.8	0.1	0.0	0.6	0.8	0.7	0.5	0.3
June	0.0	0.3	1.1	-0.4	0.9	1.2	0.3	0.7	0.4
September	0.0	-0.1	1.5	-0.6	1.1	1.4	-0.2	0.9	0.4
December	0.1	-0.4	1.3	-0.7	0.9	1.2	-0.5	0.8	0.3

(a) Reference year for chain volume measures is 2003–04. See paragraph 31 of the Explanatory Notes.

EXPLANATORY NOTES

INTRODUCTION

1 This publication presents monthly estimates of the value of turnover of retail businesses classified by industry, and by state and territory. The principal objective of the series is to show month to month movement of turnover.

2 Estimates of turnover contained in this publication are compiled from the Retail Business survey. Following a new sample design introduced in the July 2004 issue, the survey includes about 4,350 retail and selected service businesses. All 'large' businesses are included in the survey, while a sample of about 3,500 'smaller' businesses is selected. The 'large' business' contribution of approximately 55% of the total estimate ensures a highly reliable Australian total turnover estimate.

SCOPE AND COVERAGE

3 The scope of the Retail Business survey is all employing businesses with at least one retail outlet. Like most Australian Bureau of Statistics (ABS) economic surveys, the frame used for the Retail Business survey is taken from the ABS Business Register which includes registrations to the Australian Taxation Office's (ATO) pay-as-you-go withholding (PAYGW) scheme. Each statistical unit (as defined below) included on the ABS Business Register is classified to the Australian and New Zealand Standard Industrial Classification (ANZSIC) industry in which it mainly operates. The frame is supplemented with information about businesses which are classified as non-retail but which have significant retail activity.

4 The frame is updated quarterly to take account of new businesses, businesses which have ceased employing, changes in industry and other general business changes. The estimates include an allowance for the time it takes a newly registered business to get on to the survey frame. Businesses which have ceased employing are identified when the ATO cancels their Australian Business Number (ABN) and/or PAYGW registration. In addition, businesses with less than 50 employees, and which do not remit under the PAYGW scheme in each of the previous five quarters are removed from the frame.

5 The following industries included in the survey are as defined in ANZSIC:

■ Food Retailing

Supermarkets and grocery stores (5110) and non-petrol sales of convenience stores of selected petrol stations

Takeaway food retailing (5125)

Other food retailing

Fresh meat, fish and poultry retailing (5121)

Fruit and vegetable retailing (5122)

Liquor retailing (5123)

Bread and cake retailing (5124)

Specialised food retailing n.e.c. (5129)

■ Department Stores (5210)

■ Clothing and Soft Good Retailing

Clothing retailing (5221)

Footwear, fabric and other soft good retailing

Footwear retailing (5222)

Fabric and other soft good retailing (5223)

■ Household Good Retailing

Furniture and floor covering retailing

Furniture retailing (5231)

Floor covering retailing (5232)

Domestic hardware and houseware retailing (5233)

Domestic appliance and recorded music retailing

Domestic appliance retailing (5234)

Recorded music retailing (5235)

EXPLANATORY NOTES *continued*

SCOPE AND COVERAGE

continued

- Recreational Good Retailing
 - Newspaper, book and stationery retailing (5243)
 - Other recreational goods retailing
 - Sport and camping equipment retailing (5241)
 - Toy and game retailing (5242)
 - Photographic equipment retailing (5244)
- Other Retailing
 - Pharmaceutical, cosmetic and toiletry retailing (5251)
 - Other retailing n.e.c.
 - Antique and used good retailing (5252)
 - Garden supplies retailing (5253)
 - Flower retailing (5254)
 - Watch and jewellery retailing (5255)
 - Retailing n.e.c. (5259)
- Hospitality and Services
 - Hotels and licensed clubs
 - Pubs, taverns and bars (5720)
 - Clubs (Hospitality) (5740)
 - Cafes and restaurants (5730)
 - Selected services
 - Video hire outlets (9511)
 - Hairdressing and beauty salons (9526).

STATISTICAL UNITS DEFINED ON THE ABS BUSINESS REGISTER

6 The ABS uses an economic statistics units model on the ABS Business Register to describe the characteristics of businesses, and the structural relationships between related businesses. The units model is also used to break groups of related businesses into relatively homogeneous components that can provide data to the ABS.

7 In mid-2002, to better use the information available as a result of The New Tax System, the ABS changed its economic statistics units model. The new units model allocates businesses to one of two sub-populations. The vast majority of businesses are in what is called the ATO Maintained Population, while the remaining businesses are in the ABS Maintained Population. Together, these two sub-populations make up the ABS Business Register population.

ATO Maintained Population

8 Most businesses and organisations in Australia need to obtain an ABN, and are then included on the ATO Australian Business Register. Most of these businesses have simple structures; therefore the unit registered for an ABN will satisfy ABS statistical requirements. For these businesses, the ABS has aligned its statistical units structure with the ABN unit. The businesses with simple structures constitute the ATO Maintained Population, and the ABN unit is used as the statistical unit for all economic collections.

ABS Maintained Population

9 For the population of businesses where the ABN unit is not suitable for ABS statistical requirements, the ABS maintains its own units structure through direct contact with each business. These businesses constitute the ABS Maintained Population. This population consists typically of large, complex and diverse businesses. The new statistical units model described below has been introduced to cover such businesses.

Enterprise Group: This is a unit covering all the operations in Australia of one or more legal entities under common ownership and/or control. It covers all the operations in Australia of legal entities which are related in terms of the current Corporations Law (as amended by the *Corporations Legislation Amendment Act 1991*), including legal entities such as companies, trusts, and partnerships. Majority ownership is not required for control to be exercised.

EXPLANATORY NOTES *continued*

ABS Maintained Population
continued

Enterprise: The enterprise is an institutional unit comprising (i) a single legal entity or business entity, or (ii) more than one legal entity or business entity within the same Enterprise Group and in the same institutional subsector (i.e. they are all classified to a single Standard Institutional Sector Classification of Australia subsector).

Type of Activity Unit (TAU): The TAU is comprised of one or more business entities, sub-entities or branches of a business entity within an Enterprise Group that can report production and employment data for similar economic activities. When a minimum set of data items are available, a TAU is created which covers all the operations within an industry subdivision (and the TAU is classified to the relevant subdivision of the ANZSIC). Where a business cannot supply adequate data for each industry, a TAU is formed which contains activity in more than one industry subdivision.

10 For more information on the impacts of the introduction of the new economic statistics units model, refer to *Information Paper: Improvements in ABS Economic Statistics [Arising from the New Tax System]* (cat. no. 1372.0).

11 Prior to the July 2002 reference month, the Retail Business survey used the management unit as the statistical unit. From the July 2002 reference month onwards, the statistical unit is the ABN unit for businesses with simple structures, and the TAU for businesses with complex structures. In most cases, ABN/TAU units concord with the management units previously used.

SURVEY METHODOLOGY

12 The survey is conducted monthly by both telephone interview and a questionnaire mailed to businesses. The businesses included in the survey are selected by random sample from a frame stratified by state, industry and business size. Following the new sample design introduced in the July 2004 issue, the survey uses annualised turnover as the measure of business size. For the ATO Maintained Population, the annualised turnover is based on the ATO's Business Activity Statement item Total sales and for the ABS Maintained Population a modelled annualised turnover is used. For stratification purposes the annualised turnover allocated to each business is not updated each quarter as to do so would result in increased volatility in the estimates.

13 The July 2004 issue also saw the introduction of the generalised regression estimation methodology which replaced ratio estimation. For estimation purposes the annualised turnover allocated to each business is updated each quarter. The introduction of the new sample design and new estimation methodology resulted in changes to the level of the Retail Trade series. However, to facilitate comparisons over time, the historical series were revised to make the time series of estimates as continuous as possible. For more information about the changes introduced in the July 2004 issue refer to *Information Paper: Changes to the Retail Trade Series* (cat. no. 8501.0.55.002) which is available from the ABS web site <<http://www.abs.gov.au>>.

14 In the first month of each quarter, some businesses in the sample are replaced, at random, by other businesses so that the reporting load can be spread across smaller retailers.

15 Most businesses can provide turnover on a calendar month basis and this is how the data are presented. When businesses cannot provide turnover on a calendar month basis, the reported data and the period they relate to are used to estimate turnover for the calendar month.

16 Most retailers operate in a single state/territory. For this reason, estimates of turnover by state/territory are only collected from the larger retailers which are included in the survey each month. These retailers are asked to provide turnover for sales from each state/territory in which the business operates. Turnover for the smaller businesses is allocated to the state of their head office or main outlet.

EXPLANATORY NOTES *continued*

DEFINITION OF TURNOVER

17 Turnover includes retail sales; wholesale sales; takings from repairs, meals and hiring of goods (except for rent, leasing and hiring of land and buildings); commissions from agency activity (e.g. commissions received from collecting dry cleaning, selling lottery tickets, etc.); and net takings from gaming machines etc. From July 2000, turnover includes the Goods and Service Tax.

18 Turnover presented in the Retail Trade series includes net proceeds from licensed gambling activities undertaken in the Hotels and licensed clubs industry. The impact of net proceeds from gambling on movements in the Retail Trade series was discussed in *Feature article: Contribution of gambling to retail estimates* included in the December 2002 issue of this publication. The article concluded that net proceeds from gambling had not had a significant impact on quarterly movements for the series but net proceeds from gambling had increased over time and users should be aware of this when interpreting the series. An electronic release, *Contribution of Gambling to Retail Estimates* (cat. no. 8501.0.55.003), will provide updated quarterly information and will be available free of charge from the ABS web site. It will be released approximately a week after the release of the March, June, September and December issues of this publication.

SEASONAL ADJUSTMENT

19 Seasonally adjusted estimates are derived by estimating and removing systematic calendar related effects from the original series. In the Retail trade series, these calendar related effects are known as seasonal (e.g. increased spending in December as a result of Christmas) and trading day influences (arising from the varying length of each month and the varying number of Sundays, Mondays, Tuesdays, etc. in each month). Each influence is estimated by separate seasonal and trading day factors which, when combined, are referred to as the combined adjustment factors.

20 The seasonally adjusted estimates also have an allowance for an Easter proximity effect, which is caused when Easter falls late in March or early in April. This effect, when present, is combined with the seasonal and trading day factors to form the combined adjustment factors. There is also a similar allowance for the variable timing of Father's Day. See the Appendix of the July 2001 and August 2002 issues respectively of this publication for more information.

21 The Retail series uses a concurrent seasonal adjustment methodology to derive the combined adjustment factors. This means that data from the current month are used in estimating seasonal and trading day factors for the current and previous months. For more information see *Information Paper: Introduction of Concurrent Seasonal Adjustment into the Retail Trade Series* (cat. no. 8514.0).

EXPLANATORY NOTES *continued*

SEASONAL ADJUSTMENT

continued

22 Concurrent adjustment can result in revisions each month to estimates for earlier periods. However, in most instances, the only noticeable revisions will be to the combined adjustment factors for the current month, the previous month and the same month a year ago. The following table shows how the combined adjustment factor for these months, at the total Australian Retail and Hospitality/Services level, evolved under the concurrent seasonal adjustment methodology. The table presents two different estimates of the combined adjustment factors. The first row gives the combined adjustment factors estimated following the last annual reanalysis in August 2005 using data up to and including the June 2005 reference month. The second row gives the most recent combined adjustment factors estimated and used in this month's calculation of the concurrent seasonally adjusted series.

COMBINED ADJUSTMENT FACTORS

	<i>Dec</i> 2004	<i>Nov</i> 2005	<i>Dec</i> 2005
Factors as estimated at last reanalysis (June 2005 reference month)	1.30503	1.04363	1.30216
Factors as estimated with current month's data (December 2005 reference month)	1.30469	1.04181	1.30255

23 The revision properties of the seasonally adjusted and trend estimates can be improved by the use of Autoregressive Integrated Moving Average (ARIMA) modelling. ARIMA modelling relies on the characteristics of the series being analysed to project future period data. The projected values are temporary, intermediate values, that are only used internally to improve the estimation of the seasonal factors. The projected data do not affect the original estimates and are discarded at the end of the seasonal adjustment process. The retail collection uses ARIMA modelling where appropriate for individual time series. The ARIMA model is assessed as part of the annual reanalysis and following the 2005 annual reanalysis 94% of Retail series use an ARIMA model. For more information on the details of ARIMA modelling see *Feature article: Use of ARIMA modelling to reduce revisions* in the October 2004 issue of *Australian Economic Indicators* (cat. no. 1350.0).

24 The seasonal adjustment methodology is able to produce combined adjustment factors for future months. The latest factors for some future months are shown in the following table. While these factors represent the best current estimate, the actual factors used for estimating the seasonally adjusted estimates in these months will differ because they will incorporate subsequent months' data as they become available.

COMBINED ADJUSTMENT FACTORS

	<i>Jan</i> 2006	<i>Feb</i> 2006	<i>Mar</i> 2006
Factors as estimated with current month's data (December 2005 reference month)	0.97119	0.88033	0.98172

25 The seasonal and trading day factors are reviewed annually at a more detailed level than possible in the monthly processing cycle. The annual reanalysis will not normally result in significant changes. For Retail Trade, the results of the latest review are shown in the July 2005 issue.

EXPLANATORY NOTES *continued*

SEASONAL ADJUSTMENT

continued

26 In the seasonal adjustment process, both the seasonal and trading day factors evolve over time to reflect changes in spending and trading patterns. Examples of this evolution include the slow move in spending from December to January; and, increased trading activity on weekends and public holidays. The seasonally adjusted estimates still reflect the sampling and non-sampling errors to which the original estimates are subject.

27 As a result of the different treatment of Australian and state totals in the seasonal adjustment process, the Australian total for an industry group may not necessarily equal the sum of the state totals for that industry group.

TREND ESTIMATES

28 The monthly trend estimates are derived by applying a 13-term Henderson moving average to the seasonally adjusted estimates (7-term for quarterly series). The Henderson moving average is symmetric, but as the end of a time series is approached, asymmetric forms of the moving average have to be applied. The asymmetric moving averages have been tailored to suit the particular characteristics of individual series and enable trend estimates for recent periods to be produced. Estimates of the trend will be improved at the current end of the time series as additional observations become available. This improvement is due to the combined effect of the concurrent seasonal adjustment methodology and the application of different asymmetric moving averages for the most recent six months (or three quarters). As a result of the improvement, most revisions to the trend estimates will be observed for the most recent six months (or three quarters).

29 Trend estimates are used to analyse the underlying behaviour of the series over time. As a result of the introduction of The New Tax System, a break in the monthly trend series has been inserted between June and July 2000. Care should therefore be taken if comparisons span this period. For more details refer to the Appendix in the December 2000 issue of this publication.

30 For further information on trend estimates, see *Information Paper: A Guide to Interpreting Time Series — Monitoring Trends, 2003* (cat. no. 1349.0) or contact the Assistant Director, Time Series Analysis on Canberra (02) 6252 6345 or by email at <timeseries@abs.gov.au>.

CHAIN VOLUME MEASURES

31 The chain volume measures of retail turnover appearing in the quarterly issue of this publication are annually reweighted chain Laspeyres indexes referenced to current price values in a chosen reference year. The reference year is advanced in each June issue and is currently 2003–04. Each year's data in the Retail chain volume series are based on the prices of the previous year, except for the quarters of the latest incomplete year. Data for the 2005–06 financial year will initially be based upon price data for the 2003–04 financial year. Comparability with previous years is achieved by linking (or chaining) the series together to form a continuous time series. While current price estimates reflect both price and volume changes, chain volume estimates measure changes in value after the direct effects of price changes have been eliminated and hence only reflect volume changes. Further information on the nature and concepts of chain volume measures is contained in the ABS publication *Information Paper: Introduction of Chain Volume Measures in the Australian National Accounts* (cat. no. 5248.0).

RELIABILITY OF ESTIMATES

32 There are two types of error possible in estimates of retail turnover: *Sampling error* which occurs because a sample, rather than the entire population, is surveyed. One measure of the likely difference resulting from not including all establishments in the survey is given by the standard error, see below. Sampling error may be larger for the first month of each quarter, when some of the businesses in the sample are replaced by other businesses so that the reporting load can be spread across retailers.

EXPLANATORY NOTES *continued*

RELIABILITY OF ESTIMATES

continued

Non sampling error which arises from inaccuracies in collecting, recording and processing the data. The most significant of these errors are: misreporting of data items; deficiencies in coverage; non-response; and processing errors. Every effort is made to minimise reporting error by the careful design of questionnaires, intensive training and supervision of interviewers, and efficient data processing procedures.

STANDARD ERRORS

33 Seasonally adjusted and trend estimates and chain volume measures are also subject to sampling variability. For seasonally adjusted estimates, the standard errors are approximately the same as for the original estimates. For trend estimates, the standard errors are likely to be smaller. For chain volume measures, the standard errors may be up to 10% higher than those for the corresponding current price estimates because of the sampling variability contained in the prices data used to deflate the current price estimates.

34 Estimates, in original terms, that have an estimated relative standard error (RSE) between 10% and 25% are annotated with the symbol '^'. These estimates should be used with caution as they are subject to sampling variability too high for some purposes. Estimates with an RSE between 25% and 50% are annotated with the symbol '*', indicating that the estimates should be used with caution as they are subject to sampling variability too high for most practical purposes. Estimates with an RSE greater than 50% are annotated with the symbol '**' indicating that the sampling variability causes the estimates to be considered too unreliable for general use.

35 To further assist users in assessing the reliability of estimates, key data series has been given a grading of A to E. Where:

- A represents a relative standard error on level of less than 2%. The published estimates are highly reliable for movement analysis.
- B represents a relative standard error on level between 2% and 5%, meaning the estimate is reliable for movement analysis purposes.
- C represents a relative standard error on level between 5% and 10%, meaning users are advised to exercise some caution in interpreting movements for such series.
- D represents a relative standard error on level between 10% and 15% meaning users are advised to exercise caution in interpreting movements for such series.
- E represents a relative standard error on level greater than 15% (mainly affects unpublished state by industry series).

36 The table below provides an indicator of reliability for key retail turnover estimates.

	Food retailing	Depart- ment Stores	Clothing & soft good retailing	House -hold good retailing	Recrea- -tional good retailing	Other retailing	Hospit- -ality & services	Total
NSW	A	A	C	B	C	C	B	A
Vic.	B	A	C	B	C	C	C	A
Qld	B	A	C	B	D	C	C	A
SA	B	A	D	C	D	C	C	A
WA	B	A	C	C	D	C	C	A
Tas.	B	np	C	C	D	np	C	A
NT	B	np	C	B	E	np	D	B
ACT	B	A	B	C	D	D	E	B
Aust.	A	A	B	A	B	B	B	A

np not available for publication but included in totals where applicable, unless otherwise indicated

EXPLANATORY NOTES *continued*

ABS DATA AVAILABLE ON REQUEST

37 Retail Survey Special Data Service provides additional retail trade statistics which include further state industry dissections through to 'top ten' industry reports. For more information, contact the Retail Trade Special Data Services manager on Canberra (02) 6252 5220.

RELATED PUBLICATIONS

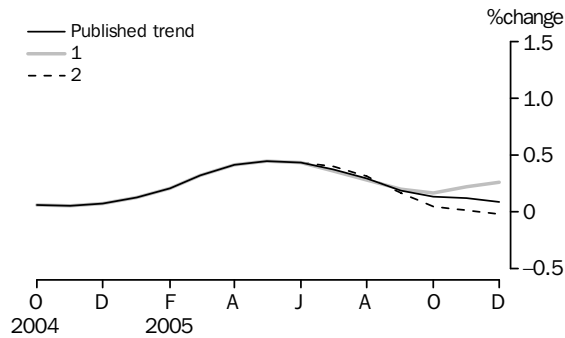
38 Current publications and other products released by the ABS are listed in the *Catalogue of Publications and Products* (cat. no. 1101.0). The Catalogue is available from any ABS office or the ABS web site <<http://www.abs.gov.au>>. The ABS also issues a daily Release Advice on the web site which details products to be released in the week ahead.

TECHNICAL NOTE REVISIONS TO TREND ESTIMATES

EFFECT OF NEW SEASONALLY ADJUSTED ESTIMATES ON TREND ESTIMATES

1 The most recent trend estimates published in this release are likely to be revised when next month's seasonally adjusted estimates become available. To assist readers of this publication in analysing retail trends, the approximate effect of the two possible scenarios on the previous trend estimates of the percentage change in total retail turnover for Australia are presented below. For more information see the trend estimates section of the Explanatory Notes.

- 1 The January seasonally adjusted estimate of retail turnover is 1.0% higher than the December estimate.
- 2 The January seasonally adjusted estimate of retail turnover is 1.0% lower than the December estimate.



2 Under concurrent seasonal adjustment, the most recent seasonally adjusted and trend estimates are likely to be revised when original estimates for subsequent months become available. The trend revision is a combined result of the revision of the seasonally adjusted estimates and the revision derived from the use of asymmetric moving averages as future data become available (for more information, refer to paragraph 28 in the Explanatory Notes). ABS research shows that about 75% of the total revision to the trend estimate at the current end of the time series is due to the use of different asymmetric moving averages when the original estimate for the next time period becomes available. To assess the reliability of the trend estimate at the current end, the 'what-if' chart presents trend estimates under two different scenarios of the next time period. The chart shows only the impact due to the changes of the asymmetric moving averages and does not include the unknown impact of revision to seasonal factor estimates that would arise when the original estimate for the next time period becomes available.

FOR MORE INFORMATION . . .

INTERNET **www.abs.gov.au** the ABS web site is the best place for data from our publications and information about the ABS.

LIBRARY A range of ABS publications are available from public and tertiary libraries Australia wide. Contact your nearest library to determine whether it has the ABS statistics you require, or visit our web site for a list of libraries.

INFORMATION AND REFERRAL SERVICE

Our consultants can help you access the full range of information published by the ABS that is available free of charge from our web site, or purchase a hard copy publication. Information tailored to your needs can also be requested as a 'user pays' service. Specialists are on hand to help you with analytical or methodological advice.

PHONE 1300 135 070

EMAIL client.services@abs.gov.au

FAX 1300 135 211

POST Client Services, ABS, GPO Box 796, Sydney NSW 2001

FREE ACCESS TO STATISTICS

All ABS statistics can be downloaded free of charge from the ABS web site.

WEB ADDRESS www.abs.gov.au



2850100012056

ISSN 1032 3651

RRP \$26.00